



اتحاد الإمارات للفروسية والسباق
UAE Equestrian and Racing Federation



RULES AND REGULATIONS FOR NATIONAL ENDURANCE EVENTS

IN THE UNITED ARAB EMIRATES

01 January 2021

Table of Contents

Article	Rule	Page
1.	GENERAL INFORMATION	6
	1.1 Activities under the UAE Equestrian & Racing Federation	
	1.2 Types of Endurance Rides	
	1.3 The Equine Endurance	
	1.4 Endurance for Horses	
	1.5 National Rides Recognition	
	1.6 Authority of the National Federation	
	1.7 Endurance Season	6
2.	GENERAL CODE OF CONDUCT	
	2.1 General Behavior	
	2.2 Dress Code	
	2.3 Conduct of Registered Persons and Crew Teams	
	2.4 Right of Admission	
3.	CODE OF CONDUCT FOR THE WELFARE OF THE HORSE	6
	3.1 Wellness of the Horse	
	3.2 Horse welfare	
	3.3 Horse/Athlete fitness	
	3.4 Horse care	
	3.5 Horse attention	
	3.6 Education	
4.	ZERO DRUG POLICY	6
	4.1 UAE Policy	
	4.2 Compulsory and Random Checks	
	4.3 UAEERF Equine Anti-Doping and Controlled Medication Regulation	
	4.4 Abuse of Horse	
5.	DEFINITIONS	7
	5.1 Abandonment	
	5.2 Breaking Out	
	5.3 Disqualification	
	5.4 Eligibility and Qualification	
	5.5 Event	
	5.6 Event Official	
	5.7 Event Schedule	
	5.8 Draft Schedule	
	5.9 Modification	
	5.10 Before Pre-ride	
	5.11 Gamesmanship	
	5.12 Hold Time	
	5.13 Private Owner	
	5.14 Trainer	
	5.15 Stable Veterinarian/Athlete Private Veterinarian	
	5.16 Person Responsible	
	5.17 Phase	
	5.18 Qualification ride sanction	
	5.19 Closing time and permission to ride in selected pace	
	5.20 Calculating Average Speed and Speed Restrictions	
	5.21 Average Speed	
	5.22 Speed Restrictions	
	5.23 Loop Time	
	5.24 Loop Speed	
	5.25 Sanctioned Qualification	
	5.26 Retirement from Competition	
	5.27 Child athlete	
	5.28 Junior Athlete	
	5.29 Young Athlete	
	5.30 Presentation	
	5.31 Rules competitions for Junior and/or Young Athletes	
	5.32 Suspensions	
	5.33 Maximum Riding Time	
	5.34 Presentation	
	5.35 Permitted Pulse	
	5.36 Serious Injury	
	5.37 Classification	
	5.38 Early Termination	
	5.39 Dropping Level	
	5.40 Fitness Ride	

	5.41 Accreditation/Accredited	
6	QUALIFICATION AND ELIGIBILITY	10
	6.1 Novice Qualification	
	6.2 National Level Qualification and Eligibility	
	6.3 National Competition Levels	
	6.4 Validity of National Level Qualifications.	
	6.5 Horse Eligibility Considering MOOCP	10
7	THE HORSE	
	7.1 Registration	11
	7.2 Minimum Age Requirement	
	7.3 Age Calculation	
	7.4 Calendar Year	
	7.5 Exemptions from Novice Qualification	
	7.6 Mandatory Out of Competition Period	13
8.	TRAINER AND ATHLETE PENALTY POINTS	
	8.1 10 Penalty Points	
	8.2 25 Penalty Points	
	8.3 80 Penalty Points	
	8.4 Catastrophic Injury	
	8.5 Horse Eliminated due to Serious Injury	
	8.6 100 Penalty points for participating during MOOCP	
	8.6 100 Penalty Points for participating during MOOCP	
	8.7 100 Penalty Points for not Presenting the horse for the final inspection	
	8.8 100 penalty points for Incorrect behavior towards the Event Officials	
	8.9 Suspension for 2 months	
	8.10 Suspension for 6 months	14
9.	REGISTRATION AND LICENSES	
	9.1 Athlete	
	9.1.1 Athlete Registration with Endurance Department	
	9.1.2 Athlete Entered in an Invitational National Event by a Foreign Federation	
	9.1.3 A Foreign National Athlete	
	9.1.4 Issuing Athlete's License for the current UAE Endurance Season	
	9.1.5 Qualified and Experienced Athlete with Authentic Proof of Performance	
	9.1.6 Online Registration Submission	
	9.2 Trainer	
	9.2.1 Trainer Registration	
	9.2.2 Foreign National Trainer	
	9.2.3 Assistant Trainer	
	9.2.4 Horse Entered by Foreign Federation	
	9.2.5 Submitting Online Registration	
10.	THE STABLE VETERINARIAN/ATHLETE PRIVATE VETERINARIAN	14
11.	THE UAE ENDURANCE CALENDAR	14
	11.1 Proposed Calendar Dates	
	11.2 Clashing Dates	
	11.3 UAE Season	
	11.4 Entries	
	11.4.1 Entry Form	
	11.5 Foreign Federation	
	11.6 Age of Horse	
	11.7 Private Owners	
	11.8 Substitution	
	11.9 Late Entries	
	11.10 Minimum Number	
12.	THE RIDE AND TECHNICAL INFORMATION SHEET AND TRAIL MAP	15
	12.1 Technical Information Sheet	
	12.2 Phases	
	12.3 Hold Time for a National Competition	
	12.4 Hold Time for Compulsory Recovery Inspection	
	12.5 Ride over 140km or above	
	12.6 Compulsory Recovery Inspection	
	12.7 Finish Line	
	12.8 Map of the Trail	
13.	THE RIDE VENUE	15
	13.1 – 13.2 Competition Arena	
	13.3 Horse Boxes	
	13.4 Fire-fighting equipment	
	13.5 Veterinary Requirement	
	13.6 Size of Clinic Entrance	
	13.7 Special Enclosure for Urine Samples for Horses	
	13.8 Training Area	
	13.9 Athletes Dress Code while Mounted	
	13.10 Good Horsemanship	

14.	THE CENTRAL VET GATE	16
	14.1 Endurance Village Layout	
	14.2 The Central Vet Gate	
	14.3 Field of Play	
	14.4 The Trail or Course	
	14.5 The CD or TD	
	14.6 Maximum Number of Crews	16
15.	VETERINARY CONTROL	17
16.	VETERINARY INSPECTIONS AND EXAMINATIONS OF HORSES	20
17.	BEST CONDITION AWARD	20
18.	VETERINARY TREATMENT DURING COMPETITION	20
19.	WEIGHT CONTROL	20
	19.1 Weight Control	
	19.2 Minimum Weight	
20.	DRESS CODE AND SADDLERY	20
	20.1 Equipment	
	20.2 Manipulation of Weight	
	20.3 Number Vest	
	20.4 Dress Code	
	20.5 Saddlery	
	20.6 Tack and Equipment	
	20.7 Permitted Equipment's	
	20.8 Safety Equipment's	
	20.9 Riding Helmets	
	20.10 Athlete Shoes	
	20.11 Prohibited Tack/Equipment	
	20.12 Whips	
	20.13 Dyes	
21.	ON THE TRAIL	21
	21.1 One Athlete – One Horse Sport	
	21.2 Follow Routes	
	21.3 Loops	
	21.4 Colored Markers/Flags	
	21.5 Safety of horses and athletes	
	21.6 Mounted Position	
	21.7 Start Line	
	21.8 Staggered Start	
	21.9 Time-Keeping	
	21.10 Crossing the line illegally	
	21.11 No Late Start	
	21.12 Special Arrangements due to Bad Weather Conditions	
	21.13 Warning against any act that results to giving unfair advantage	
	21.14 Illegal change rider during competition	
	21.15 Water Help	
	21.16 Directions	
	21.17 Permitted Assistance	
	21.18 Tired Horse	
	21.19 Maintain Decorum	
	21.20 Departure Gate	
	21.21 Forbidden Assistance	
22.	IN THE VET GATE	23
	22.1 Horse on Trail	
	22.2 Vet Card	
	22.3 Pulse Rate	
	22.4 Protocol	
	22.5 Best Condition Horse	
23.	THE GROUND JURY	23
	23.1 Panel of Officials	
	23.2 What is Ground Jury Consisting of	
	23.3 Ground Jury's Jurisdiction	
	23.4 Ground Jury's Authority	
	23.5 Decisions	
	23.6 Appeals	
	23.7 Reinstatement	
	23.8 Ground Jury – Technical Delegate	
	23.9 Ground Jury Report	
24.	THE TECHNICAL DELEGATE	23
	24.1 Role of TD	
	24.2 Duties and Responsibilities	
	24.3 Supervision	
	24.4 Advisory Role	

	24.5 Absolute Authority	
	24.6 TD Report	
25.	THE VETERINARY DELEGATE	23
	26.1 Definition	
	26.2 Composition	
	26.3 Elimination	
	26.4 Benefit of the Doubt	
	26.5 Final Elimination	
	26.6 VP Report	
26.	THE STEWARDS	24
	27.1 Selections	
	27.2 Chief Stewards	
	27.3 Qualification	
	27.4 Arrangements	
	27.5 Stable Control	
	27.6 Other Duties	
	27.7 Phase Completion	
	27.8 Ties with OC	
	27.9 Smooth Running	
	27.10 Chief Steward Report	24
27.	THE TREATMENT VETERINARIANS	
	28.1 The Treatment Veterinarians	
	28.2 Decision	
	28.3 Report	
28.	THE LABORATORY TECHNICIANS	24
29.	THE FARRIER	24
30.	THE TIMEKEEPERS	
	31.1 Recording Method	
	31.2 Composition	
	31.3 Time Keeping	
	31.4 Duties and Responsibilities	
	31.5 Combined Role	
31.	THE HEART RATE SYSTEM PROTOCOL	25
32.	REGISTRATION AND PENALTY FEES	25
	33.1 Registry office Charges	
	33.2 Fixed Penalties	
33.	PROCEDURE	26
34.	CODEX	
	ANNEX 1 – OFFICIALS REQUIRED FOR COMPETITIONS	29
	ANNEX 2 – FOREIGN PERFORMANCE RECORD FORM	30
	ANNEX 3 – CLARIFICATION OF ELIMINATION CODES	31
	ANNEX 4 – UAE RANKINGS FOR HORSES, ATHLETES, TRAINERS, OWNERS AND STABLES	32
	ANNEX 5 – EXAMINATION AFTER THIRD (OR SUSEQUENT) FTQ-GA	33
	ANNEX 6 – CRITERIA TO OBTAIN AN ENDURANCE TRAINER LICENSE	34
	ANNEX 7 – TACK AND EQUIPMENT	35
	ANNEX 8 – DIAGRAMS OF BLINKERS AND CHEEK PIECES	37
	ANNEX 9 – DECORUM DURING HORSE INSPECTIONS	39
	ANNEX 10 - QUALIFICATION DIAGRAM	40

UAE EQUESTRIAN AND RACING FEDERATION

Rules and Regulations for National Endurance Events

1. GENERAL INFORMATION

- 1.1 The UAE EQUESTRIAN AND RACING FEDERATION (UAEERF) is the legally appointed entity to control and administer equestrian sport in the United Arab Emirates (UAE). It currently includes Endurance Riding, Show Jumping, Dressage, Eventing and Tent Pegging. It is expected that over the time more equestrian disciplines will be added.
- 1.2 Two types of endurance rides are held in UAE – the National Rides, governed by National Rules, and the FEI Rides, held under relevant Rules of the Federation Equestre Internationale (FEI).
- 1.3 Equine Endurance is a very challenging and highly competitive, world class sport. Endurance Riding is a competition to test the competitor's ability to safely manage the stamina and fitness of the horse over an endurance course in a competition against the track, the distance, the climate, the terrain, and the clock. Therefore, the most important responsibility of the Technical Delegate, the Ground Jury, the Stewards, the Veterinary Commission, the Team Veterinarian, the Grooms and ultimately the Athlete and his team is to ensure the health and welfare of the horse by diligent application of their skill together with a caring, knowledgeable attitude by the Athlete. To be successful, the Athlete must have knowledge of pace and efficient and safe use of the horse across country.
- 1.4 National Endurance in the UAE is for horses.
- 1.5 Recognized National Endurance Rides in the UAE must be sanctioned by UAEERF. Only approved Organizing Committees (OCs) will be permitted to host the National and International events. A team of UAEERF officials' representation for the supervision of the entire events must be included in the list of officials for the events.
- 1.6 Under these Rules, the UAEERF has power to:
 - 1.6.1 Cancel at any time or refuse the registration of any endurance stable, farm, equestrian club, or horse.
 - 1.6.2 Suspend at any time or refuse to issue or renew the registration of any endurance Athlete, trainer or official.
 - 1.6.3 Refuse the nomination of any UAE registered endurance Athlete or horse, in any endurance event within or outside the UAE.
- 1.7 The UAE Endurance Season begins on 1st October and ends on 30th September in the following year. Endurance competitions and qualification rides are held mainly in cooler weather from mid-October till mid-April. Liable to be extended on requirement.

2. GENERAL CODE OF CONDUCT

- 2.1 All persons attending an endurance event at any venue in the UAE in whatever capacity must always exercise civil behavior. Dress must be appropriate and modest. Shorts and sandals are not permitted inside the vet inspection enclosure.
- 2.2 At all ceremonies, Athletes and officials must wear a jacket, a shirt with collar and a tie (weather permitting) or the UAE national dress.
- 2.3 Registered persons and crew teams must always exercise restraint. Any act that brings disrepute to the sport and/or involves violence or abuse of an official and/or of any other person shall be severely dealt with under these Rules.
- 2.4 Right of Admission to the endurance venue is reserved.

3. CODE OF CONDUCT FOR THE WELFARE OF THE HORSE

- 3.1 At All times, the welfare of the horse must be paramount and must never be subordinated to competitive or commercial influences.
- 3.2 At all stages during the preparation and training of competition horses, welfare must take precedence over all other demands. This includes good horse management, modern training methods, superior farriery and tack and comfortable transportation.
- 3.3 Horses and competitors must be fit, competent and in good health before they are allowed to compete. This encompasses medication use, surgical procedures that threaten welfare or safety, pregnancy in mares and the misuse of aids (equipment specifically meant for punishing/urging an exhausted horse or to exercise abusive/painful control over a spirited horse, etc.).
- 3.4 Events must not prejudice horse welfare. This involves paying careful attention to the competition areas, ground surfaces, weather conditions, stabling, site safety and fitness of the horse for onward travel after the event.
- 3.5 Every effort must be made to ensure that horses receive proper attention after they have competed and are treated humanely even after their competition careers are over. This covers proper veterinary care, competition injuries, retirement, and euthanasia.
- 3.6 The UAEERF urges all involved with the sport to attain the highest levels of education in their areas of expertise.

4. ZERO DRUG POLICY

- 4.1 The United Arab Emirates follows a strict Zero Drug Policy
- 4.2 Horses and Athletes while in competition must be free from any prohibited substances. Specific and random checks for prohibited substances may be carried out at all competitions.
- 4.3 Violation of the UAEERF Equine Anti-doping and Controlled Medication Regulations will be severely dealt with:
 - 4.3.1 The UAEERF Equine Anti-doping and Controlled Medication Regulation is in line with FEI. (www.fei.org.)

- 4.3.2 The UAEERF Endurance Committee shall provide the final verdict.
- 4.4 Abuse of Horses
- 4.4.1 Any act causing undue pain and/or discomfort to a Horse, including but not limited to:
- 4.3.2.1 whipping or beating
 - 4.3.2.2 **giving shock using electric device**
 - 4.3.2.3 **To use spurs excessively or persistently.**
 - 4.3.2.4 **Jab in the mouth or rap on the legs**
 - 4.3.2.5 **abnormally sensitize or desensitize any part of a horse.**
 - 4.3.2.6 **leave the Horse without food, drink, or exercise.**
 - 4.3.2.7 **To compete using an exhausted, lame, or injured Horse**
- 4.4.2 **Protest against abuse** of horse:
Any act of Horse abuse during an event must be immediately reported to the Ground Jury. In case of Abuse of Horse noticed any other time it must be reported to the Secretary General of the NF.

5. DEFINITIONS

- 5.1 Abandonment of an event can be due to extreme bad weather or for reasons entirely beyond the control of the OC. The decision shall be taken by the President of the Ground Jury in consultation with the senior officials and the OC. The safe evacuation of every Athlete, horse and staff on the trail must be ensured by the OC
- 5.2 Breaking Out of the departure gate, in defiance of the instructions of the Event Officials, in order to gain time, is a punishable offence under these Rules THE HORSE.
- 5.3 The term Disqualify means that an Athlete or horse may no longer continue in the event, and/or partake in any prize money and/or trophies or points and that any placing awarded at that event has been forfeited. Disqualification may be extended to cover the owner and/or the trainer and to cover any other event under these Rules. Disqualification occurs when a Combination is removed from a Competition and/or Event (or its results are subsequently disqualified after the Competition and/or Event) for a violation of these Endurance Rules or the Competition Schedule.
- 5.4 Eligibility and Qualification refer to the entry conditions that an Athlete and horse must fulfill before being permitted to take part either in a national competition or in an UAEERF Qualification Ride. In case of dispute, the UAEERF, after due scrutiny, shall give a final decision on the eligibility and qualification of an Athlete and horse to take part in an event.
- 5.5 A National Endurance Event refers to a complete endurance competition duly sanctioned by the UAEERF and hosted by an approved Organizing Committee to be held at a recognized venue. An event is deemed to commence one hour before the first inspection and end when the last finishing horse has completed the final vet gate protocol and the Best Conditioned Horse selection.
- 5.6 Event Official refers to a person appointed by the OC to assist with the management of the event. Event Officials must be suitably qualified and experienced for the position. Best efforts must be made by the OC to avoid any conflict of interest.
- 5.7 Event Schedule refers to a prescribed document containing all pertinent details of an event, completed by the OC and approved by UAEERF. The schedule is the contract between UAEERF and the OC in accordance with the provisions under these Rules.
- 5.8 For approval, a duly completed Draft Schedule for a proposed National event must reach the UAEERF at least 2 weeks in advance. (www.UAEERF.ae).
- 5.9 Modification - President of the Ground Jury and/or the Technical Delegate together with the President of the Veterinary Commission in consultation with the OC can decide to modify the length of timed holds according to extreme weather conditions or other exceptional circumstances. Modifications must be announced to all participating Athletes and Trainers before the start of the phase concerned. To safeguard the welfare of the horse and the safety of the athlete, the Veterinary Commission, in discussion with the President of the Ground Jury and / or the Technical Delegate, will assess the welfare implications of the ride conditions and advise the OC of appropriate changes to the presentation and heart rate parameters. Any modification or changes to the approved schedule must be notified to the UAEERF in the official report by the President of the Ground Jury and the Technical Delegate:
- 5.9.1 Reduce the maximum heart rate.
 - 5.9.2 Shorten presentation time and
 - 5.9.3 Increase the hold time that affect the welfare of the horse
- Throughout the competition the President of the Veterinary Commission, the Veterinary Delegate and the President of the Ground Jury must monitor the ride conditions in combination with the number of horses that fail to qualify at each inspection. It is their responsibility to make changes to the inspection parameters to protect the horse.
- 5.10 Before the pre-ride inspection the President of the Ground Jury and/or the Technical Delegate must, in coordination with the approved Course Marker / Course Designer check and approve, in advance, the layout of the course and ride conditions to protect the welfare of the horse and safety of the athlete based on the classification of tracks, the degree of difficulty and the complicating weather conditions.
- 5.11 **Gamesmanship** is cheating to gain time inside the vet gate at any point (by taking time to remove tack after the horse has been timed into the vet inspection enclosure or stopping the horse behind a group of other horses or whistling to induce it to urinate

or diverting it in a direction away from the Commission Veterinarian who is waiting to inspect the horse or by leaving the departure gate before the recorded departure time.) Gamesmanship is punishable offence under these Rules.

- 5.12 Hold Time refers to a compulsory rest period between phases of the competition. The 'hold' begins once the horse is timed into the vet inspection enclosure and has successfully passed the vet inspection. At all presentations, except requested/compulsory inspections, the horse must be without saddle and tack. In all national competitions there must be at least one hold of 40 min. If a compulsory recovery inspection is prescribed for a particular vet gate, the hold time must be at least 40 minutes. The horse may be presented for requested/compulsory inspection not earlier than 15 minutes before its departure time.
- 5.13 **PRIVATE OWNER** is an owner who has horses registered in his/her name or name of stable/s and have no benefits, financial, logistics or otherwise, from the government or Royal Stables. (Art. 11.7)
- 5.14 **Trainer** is a registered person responsible for the preparation of the horse for competition as well as advising the riding tactics during the event. Trainer is also responsible for preparation of horse which involves conditioning, nutrition and exercise program and administration of therapeutic substances under veterinary care and advice.
- 5.15 Stable Veterinarian/Athlete Private Veterinarian (APV) is a registered veterinarian and a person responsible under a trainer and is responsible for any medication given to a horse, vaccination history of a horse and will be the contact person between the UAEERF and the stable regarding the health and fitness status of horses under the jurisdiction of the trainer. Private Veterinarians used by Private Owners should also be registered with the stable and with the UAEERF. All registered veterinarians must maintain record of all treatment and the health history of each horse under their trainer's jurisdiction. Such record should be available to UAEERF on any inquiry.
- 5.16 Persons Responsible - The Person Responsible shall be the Athlete who rides the Horse during an Event, but the Owner/Trainer and other Support Personnel including but not limited to grooms and veterinarians may be regarded as additional Persons Responsible if they are present at the Event or have made a relevant Decision about the Horse. In Endurance, the Trainer shall be the additional Person Responsible.
- 5.17 Phase (or Route) refers to a definite section of the endurance trail at the end of which there is a compulsory hold period. There is no hold time after the final phase of the event. No phase of a national competition or UAEERF qualification ride may be longer than 40km. Each phase shall have a distinct color marking/flag
- 5.18 A 'Qualification' Ride sanctioned by UAEERF shall be either of 40km or 80km approx. UAEERF Qualification Rides are set-speed rides with a minimum speed of 12 km/h and maximum of 16 km/h. Any change is subject to UAEERF approval.
- 5.19 Unless closing times are specified for each vet gate, competitors will be permitted to ride at their selected pace.
- 5.20 Calculating Average Speed and Speed Restrictions
- 5.21 The average speed of a Combination over a course (including for the purposes of determining if 16 km/hour has been exceeded) is the average speed over all completed Loops (including any Loop that ends in a 'Failed to Qualify' designation). If a Loop is not completed, then the speed of that partial Loop does not count towards the average. If a Horse fails to complete the first Loop, no average speed will be recorded.
- 5.22 To comply with the speed restriction of 16 km/hour the average speed of a Combination in each Loop must be no more than the applicable speed restriction. It is not enough for the Combination to keep its average speed over all of the Loops combined under the speed restriction. The average speed of a combination in each loop must be no more than the applicable speed restriction (16km/h). If the average speed of a combination exceeds the applicable speed restriction on any loop, the combination will be classified as Failed to Qualify Speed (FTQ-SP).
- 5.23 Loop time is calculated from the time the Combination crosses the start line of a Loop until it reaches the end line of that Loop. Loop time does not include any recovery time or time spent in the Vetting Area.
- 5.24 Loop speed is the average speed of the Combination over a Loop, calculated by dividing the length of the Loop by the time taken by the Combination to complete the Loop.
- 5.25 An UAEERF sanctioned Qualification Ride of 80km approx. should preferably have two compulsory rests or hold periods. In a 40km UAEERF Qualification Ride a hold period is optional.
- 5.26 Retirement from a competition after the start, results when a competitor voluntarily withdraws from a event, but may only be considered when his/her horse has successfully completed veterinary inspection and declared fit to continue. Withdrawal occurs when an Athlete withdraws his Horse from the Competition (without otherwise being removed from the Competition) at or prior to the First (Pre-Ride) Inspection.
- 5.27 A 'Child' Athlete is a registered Athlete whose age is between 11 – 13 years. Generally, a Child Athlete will be permitted only in specially supervised rides restricted to children. UAEERF may however, permit a Child Athlete upon review of his riding ability, to take part in set-speed Qualification Rides.
- 5.28 A 'Junior' Athlete is a registered Athlete whose age is between 14 – 18 years.
- 5.29 A 'Young' Athlete is a registered Athlete whose age is between 18 – 21 years.
- 5.30 Under these Rules competitions for Junior and/or Young Athletes may be organized.
- 5.31 A 'Senior' Athlete is a registered Athlete whose age is 21 years or above.
- 5.32 Suspension refers to a withdrawal of the registration/license for a specified period or until its validity, within or outside the UAE.
- 5.33 'Maximum Riding' Time refers to the last and final instant that a competitor can cross the finish line, hopeful of being included in the list of successful finishers, provided the Athlete meets the weight criteria and the horse successfully passes the final vet inspection.
- 5.34 'Maximum Riding' Time for any one or all the phases refers to a set maximum time that the competitor can take to complete the specified phase/s.

- 5.35 'Minimum Riding' Time for each phase refers to a preset minimum time that a Athlete can take to travel over each phase of a set-speed UAEERF Qualification Ride.
- 5.36 'Presentation' Time refers to the maximum time allowed at the end of a phase (route) for the horse to be presented for inspection.
- 5.37 In National and FEI events the maximum permitted pulse will be 64 beats per minute (bpm) within 20 minutes of arrival and at the final vet check where it shall be 64 bpm within 20 minutes. Keeping the welfare of the horse in mind, the above criterion may be revised in a competition. The presentation time is part of the competitor's riding time except at the final vet inspection. However, the Organizing committee may request to extend the presentation time for the veterinary inspection, provided that it does not exceed 30 minutes (applicable to final vet gate only) with the written consent of UAEERF prior to start of the event with the approval of PGJ, FVD and the president of veterinary commission
- 5.38 In UAEERF-sanctioned set-speed Qualification Rides, the maximum permitted pulse is 56 bpm within 20 minutes of arrival at all the vet checks and the time taken to present the horse is part of the riding time.
- 5.39 UNDER NO CIRCUMSTANCES THE PULSE CRITERION BE INCREASED ONCE THE START HAS BEEN AFFECTED
- 5.40 MOOCP – Mandatory Out of the Competition Period. After competing in a National Event or FEI Event, a Horse may not compete in any National Event(s) or FEI Event(s) for the following Mandatory Out of Competition Period.
- 5.41 Serious Injury: a serious injury of a Horse may be classified as musculoskeletal or metabolic:
- 5.41.1 Serious musculoskeletal injuries include but are not limited to fractures, serious tendon or ligament damage, or muscle injuries that preclude normal ambulation. A Horse that is non-weight-bearing, even if the cause is undiagnosed, must be classified as having a Serious Injury (musculoskeletal).
- 5.41.2 Serious metabolic injuries include any condition that requires urgent treatment or fails to be completely resolved by treatment at the venue, and (following a vote with at least 2/3 majority) in the opinion of the President of the Veterinary Commission, the President of the Treating Veterinary Commission, and the Foreign Veterinary Delegate requires further assessment and continued appropriate veterinary care beyond the period of Competition. Examples include but are not limited to persistent colic, acute kidney injury, myopathy, collapse, heat stroke, and other metabolic conditions that may compromise the Horse's health and well-being. If the condition is such that referral is recommended, it must be considered a Serious Injury (metabolic).
- 5.42 CLASSIFICATION
- 5.42.1 INDIVIDUAL: Winner is the combination with the shortest elapsed riding time and who successfully passes or complies with all protocols and requirements, including but not limited to the final veterinary inspection.
- 5.42.1.1 Only combinations in which the horse has passed all the horse inspections at all stages of the competitions are entitled to be included in the final classification.
- 5.42.1.2 Individual classification: Regardless of the order and rules for starting, each Athlete must carry out the entire competition as if competing alone against the clock, taking account of the track, distance, terrain and climate and without compromising the welfare of the horse. The combination that finishes the course in the shortest time, while respecting all course requirements (including minimum weight requirements), and passing all Horse inspections, medication controls and any other protocols in place for the safety of the Horse and athlete under the UAEERF Rules and Regulations will be classified as the winner of the competition.
- Team: Winning team is the team with the best time after adding the final classification of the 3 highest placed competitors in the team. In case of a tie, the winning team will be the one whose third competitor has the best time. In the event there are 2 members of a team who are classified, such teams are eligible for placing after the teams with 3 members.
- TEAM COMPETITION: May be held in prestigious national rides. This must be stated in the event schedule and the Ride Entry Form and the Ride Technical Sheet. Each team shall comprise 3-4 competitors, one of whom shall be the Captain. Teams must be declared before the start.
- 5.43 Early Termination of an event refers to stopping of the competition midway due to rising bad weather or for a reason entirely beyond the control of the OC. This envisages a situation where there is time for the officials to react.
- The safe evacuation of every Athlete, horse and staff on the trail shall be the primary concern of the OC. The competition may still be saved if all competitors who are still on the trail can be informed of the impending termination at the end of the current phase at which point at least 60 per cent of the total distance of the event must have been completed.
- In such case the Ground Jury shall have the authority to declare a result for the prematurely terminated event.
- 5.44 **Dropping level:** When an athlete or horse failed to qualify at least once at their current qualification level within the period set out in art. 6.1.1/6.1.2 from the day the qualification was granted, the athlete/horse will drop down one level.
- 5.45 **Fitness Ride:** Ride is an 80-99km endurance event to revalidate the novice qualification of a horse to prove their competency. It is eligible only for experienced horse.
- 5.46 **Experienced Horse.**
- A horse who finishes an endurance competition.
- 5.47 **Accreditation/Accredited:** International or National level status qualification recognition and acceptance.

6. QUALIFICATION AND ELIGIBILITY

6.1 Novice Qualification

- 6.1.1 An athlete/horse must successfully complete 2 rides of distances from 40 to 79 km and 2 rides of distances from 80 to 99 km at maximum speed of 16km/h and with a minimum speed of 12km/h
- 6.1.2 An athlete/horse must complete the requirements of the qualification phase within 24 months from the first successful novice qualification ride completion.
- 6.1.3 An athlete/horse is eligible to compete in CEN events up-to 120km only after completing all the novice qualifications including respecting MOOCP(for horses).
- 6.1.4 Failing to compete and qualify in an endurance event within 24 months from the day the novice qualification has been granted will require the athlete to requalify for Novice
- 6.1.5 Novice Qualification Exemption
 - 6.1.5.1 For Horses 8 years and older, dispensation of art. 6.1.3 can be granted if horse and athletes, not necessarily as a combination, have:
Successfully completed a cumulative minimum of 240 km distance in events over distances of 80km, in a minimum of three endurance events in a 36-month period, including at least one competition of 80km or more at the age of 8 or older
 - 6.1.5.2 Ssuccessfully completed a novice qualification in the past

6.2 National Level Qualification and Eligibility (See Diagram in Appendix 10)

- 6.2.1 All valid FEI equivalent Ride Distance or FEI star level qualification achieved are accredited.
- 6.2.2 FEI star level has equivalent National Level Qualification (Please refer to levels).
- 6.2.3 All valid qualifications acquired from other National Federation with similar distances are accredited.
- 6.2.4 Dropping of level applies (please see in definitions)
- 6.2.5 Endurance Events in the United Arab Emirates composed of competition levels A, B, C & D

6.3 National Competition Levels.

6.3.1 Level A: Competition from 100 to 119km in one day

- 6.3.1.1 An athlete/horse with valid novice qualifications is allowed to participate in level A endurance events.
- 6.3.1.2 An Athlete/horse with FEI 1* eligibility or higher is allowed to participate in Level A endurance events.

6.3.2 Level B: Competition in 120km in one day

- 6.3.2.1 An athlete/horse with valid novice qualifications is allowed to participate in level B endurance events.
- 6.3.2.2 An Athlete/Horse who successfully completed an FEI equivalent distance to level A and B is allowed to participate in level B endurance events.
- 6.3.2.3 An athlete/horse with FEI 1* rating or FEI 2* eligibility is allowed to participate in Level B endurance events.

6.3.3 Level C: Competitions from 121-139km in one day

- 6.3.3.1 An Athlete/horse who successfully completed Level A or B Endurance events is allowed to participate in level C endurance events.
- 6.3.3.2 An athlete/horse with FEI 2* eligibility or higher is eligible to ride in level C

6.3.4 Level D: Competitions from 140 and above

- 6.3.4.1 An Athlete/horse who successfully completed Level B or C Endurance events is allowed to participate in level D endurance events.
- 6.3.4.2 An athlete/horse with FEI 3* eligibility or higher is eligible to ride in Level D

6.3.5 Validity of National level Qualifications.

- 6.3.5.1 Athlete: 5years
- 6.3.5.2 Horses: 2 years
- 6.3.5.3 The validity period will begin to run from the day that a qualification is granted.
- 6.3.5.4 Each time an athlete or horse successfully completed a competition at their current level, the qualification will be automatically revalidated for the period set out in articles 6.4.1 and 6.4.2

6.4 Horse can compete in the above-mentioned rides considering the MOOCP. Please refer to art xx.x

7. The Horse:

7.1 Registration

- 7.1.1 A horse must be registered with the Endurance Department of UAEERF before it can enter in a National or International Endurance Event or an UAEERF Qualification Ride in the UAE.
- 7.1.2 Every horse must be under the training of an UAEERF registered horse trainer.
- 7.1.3 A horse entered by a foreign federation in an invitational National event is exempt from the requirement under 6.1 and 6.2.
- 7.1.4 Passport, ownership, and nationality
- 7.1.5 A horse must have a duly filled out and validated, approved national passport, preferably in English, or an FEI passport before it can be registered under these Rules.
- 7.1.6 If a horse is jointly owned by several persons or by a company, one of the joint owners or an authorized person/entity must be named at the time of registration, to represent all the owners or only the company.

7.2 Minimum Age Requirement for Horses

- 7.2.1 5 years and above Novice Qualification rides distance between 40 -80 km

- 7.2.2 6 years and above Level A National rides 100 km-119 km
- 7.2.3 7 years and above Level B National rides 120 km – effective 1st September 2021
- 7.2.4 7 years and above Level C National rides 121 km – 139 km
- 7.2.5 8 years and above Level D National rides 140 km –and above
- 7.2.6 All ages are determined as of the date of the event for which eligibility to participate is sought, and must be confirmed either through reliable registrations or written Veterinary opinion, which may be recorded within Passports. Horses are deemed to have their birthday on the 1st of January.
- 7.2.7 In National competitions and UAEERF Qualification Rides, the year of birth of a horse is the calendar year (01 January – 31 December).

7.3 Exemptions from Novice Qualification Requirements

- 7.3.1 For Horses 8 years old and older, dispensation of art. 7.12 can be granted if horses and athletes, not necessarily as a combination, have accumulated a minimum of 240 km in a maximum of three National Events in a 36-month period.
- 7.3.2 It is the responsibility of the owner/trainer to provide authentic information concerning the performance record of their horses. The UAEERF Endurance Department shall verify the record before the entry can be accepted.
- 7.3.3 Furnishing fraudulent information with the intention of securing entry in an event will result in severe punishment under these Rules.
- 7.3.4 A Certificate of Capability issued by a National Federation will be accepted as proof of eligibility.
- 7.3.5 The entry of a horse not suitably qualified for a national or FEI event will not be accepted.

* ALL QUALIFICATION AND ELIGIBILITY CRITERIA ARE SUBJECT TO UAEERF APPROVAL *

7.4 Mandatory Out of Competition Period

- 7.4.1 After competing in an Endurance event, a Horse must be given a mandatory minimum rest period, before it is again eligible to participate in another competition.

Distance completed:	From crossing the start line up to 54 km	5 days
Over 54 -	106 km	12 days
Over 106 -	126 km	19 days
Over 126 -	146 km	26 days
Over -	146 km	33 days

- 7.4.2 The total MOOCP commences at Midnight at the end of the day that the ride finishes (24.00 hours), as denoted by the maximum

Incident	Additional Mandatory Out of Competition Period and other consequences
Horses that exceed an average of 20 km/hour over completed Loops of a course	7 days
Second FTQ-ME (Failure to Qualify –metabolic) in a rolling year	14 days
Third (or subsequent) FTQ-ME (Failure to Qualify – metabolic) in a rolling year	60 days
Third (or subsequent) FTQ-GA (Failure to Qualify – irregular gait) in a rolling year	180-day Mandatory Out of Competition Period Horse must undergo a specific examination protocol before being eligible to compete in any FEI Events or National Events (the protocol for this examination is set out in Annex 5).
Serious Injury (musculoskeletal)	180 days
Serious Injury (metabolic)	60 days
Failure by the Person Responsible to provide a copy of the veterinary report from a designated/approved referral centre to the FEI Veterinary Department in accordance with Article 840	180 days (and Horse will not be permitted to compete until the veterinary report is provided)

ride time allowed, and finishes at the same time on the last full day of the rest period. The published ride start time of the horse's next ride must fall after the expiry of the rest period.

- 7.4.3 Additional Mandatory Out of Competition Period and other consequences (Illustration's)

- 7.4.4** Any mandatory rest periods incurred prior to 1st July 2020 under previous editions of these endurance rules must be complied with and will not be affected by the new Mandatory Out of Competition Periods set out in these Endurance Rules.
- 7.4.5** Any incidents listed in the table that occur at a competition on or after 1st July 2020 will give rise to the additional Mandatory Out of Competition Periods specified in that provision, subject to the below.
- 7.4.5.1** For the incidents that have cumulative requirements (e.g. Two or more FTQ- ME or three or more FTQ-GA in a rolling year) the additional Mandatory Out of Competition Periods will apply even if one or more of the FTQ, within a rolling year occurred prior to 1 July 2020, except as set out in paragraph (b) below
- 7.4.5.2** If a horse was designated FTQ-ME or FTQ-GA a number of times within a year prior to 1st July 2020 and no extended mandatory rest period was incurred under the previous Endurance Rules (eg. Because the FTQ would result in additional MOOCP under these Endurance Rules will not apply to those prior FTQ unless the horse incurs a further FTQ on or after 1st July 2020 (for example, if a Horse was designated FTQ-GA three non-consecutive times within a year of 1st July 2020, the additional MOOCP under these Endurance Rules for three FTQ-GA will not apply. However, if the horse is designated FTQ-GA again on or after 1st July 2020, and the new FTQ-GA falls into the same rolling year as two or more of the FTQ-GA incurred period to 1st July 2020, then the additional MOOCP under these Endurance Rules for three or more FTQ-GA will apply).
- 7.4.6** It is the responsibility of the President of the Veterinary Commission, President of the Treating Veterinary Commission and Foreign Veterinary Delegate to review the treated Horses at the end of the Competition on a case-by-case basis, and to specify if those Horses must (i) have an additional Mandatory Out of Competition Period under Art. Art. 7.4.1 receive authorized treatment, without requiring such additional Mandatory Out of Competition Period.
- 7.4.7** The Mandatory Out of Competition Period for Serious Injuries or repeated FTQ-Me may be extended further at the discretion of the FEI UAEERF Veterinary Department based on a diagnosis by a designated referral center or other approved clinic.
- 7.4.8** Consequences during MOOCP - for Art. 7.4 the standard Mandatory Out of Competition Period starts to run from 00:01 GMT the after the relevant ride finishes (the end of the ride is determined by the maximum ride time allowed) and finishes at midnight GMT on the last day of the Mandatory Out of Competition Period. For Art. 7.4.1 any additional Mandatory Out of Competition Period starts to run from 00:01 GMT the day after the standard Mandatory Out of Competition Period expires and finishes at midnight GMT on the last day of the additional Mandatory Out of Competition Period. In any case, the published ride start time of the Horse's next competition (national or international) must fall after the expiry of the applicable Mandatory Out of Competition Period.
- 7.4.9** FEI registered horses may not compete in any National Events or FEI Events during any Mandatory Out of Competition Period. Failure to comply with the provision will result in the penalties set out in Art. 8.6.
- 7.4.10** The President of the Veterinary Commission, President of the Treating Veterinary commission and Foreign Veterinary Delegate will refer a Horse to a referral center (designated/approved at their discretion) if they consider that the Horse requires further assessment and continued veterinary care beyond the period of Competition.
- 7.4.11** If a Horse is referred to a referral center, the Person Responsible must provide the UAEERF with the veterinary report from that referral center within 72 hours of the release of the Horse from the center, or (in the event the Horse dies) within 72 hours of the death of the Horse.
- 7.4.12** Mares may not compete after their fourth month of pregnancy and not before 6 months after foaling.
- 7.4.13** Horses which are known to be de-nerved cannot be entered. Owners/trainers violating these rules will be penalized.
- 7.4.14** Veterinary treatment may not be administered to a horse during the competition without the written approval of the Veterinary Commission. Veterinary form must be filled and approved prior to the treatment of the horse in competition. (www.fei.org/veterinary/doping-and-controlled-medication). Authorized treatment does not affect classification of the horse. Therefore:
- 7.4.14.1** The use of Banned Substances is always strictly prohibited.
- 7.4.14.2** No intra-articular administration of any medication is allowed during the events
- 7.4.14.3** Administration of treatments and supportive therapies during an event must be authorized by the VC/VD before administration, using the appropriate Veterinary Form.
- 7.4.14.4** The treatment or supportive therapy, if authorized, may only be administered by an Official Veterinarian except for those substances administered orally or by nebulization. In emergency situations where the Horse's welfare is at risk, emergency therapeutic treatments may be administered. Following such administration, a Veterinary Form 1 must be presented for retrospective authorization and for determination, where appropriate, of whether the Horse can continue competing at the Event. The Veterinary Form 1 must under all circumstances be completed before leaving the Event venue and before the Period of the Event has expired.
- 7.4.14.5** The use of a Controlled Medication Substance may only be authorized for treatment during an Event in exceptional circumstances, in accordance with these VRs, the EADCMRs and the GRs.
- 7.4.14.6** Treatments administered before an FEI event (e.g., during transport) may be retroactively authorized, using the appropriate Veterinary Form (in accordance with these VRs), by the VC/VD, when appropriate, on arrival at the event. Retrospective authorization will not be automatically granted and will be at the discretion of the VD and the GJ.

- 7.4.14.7 In accordance with the Code of Conduct for the Welfare of the Horse, the VC/VD must always verify prior to signing the Veterinary Form whether the medication requested, or previously administered, may affect:
- 7.4.14.8 the Horse's fitness to compete.
- 7.4.14.9 the fairness of the Competition; and/or
- 7.4.14.10 the welfare of the Horse and/ or Athlete.
- 7.4.14.11
- 7.4.14.12 Any Athlete, Trainer, Team Vet and/or employee is found or reported guilty of providing unauthorized treatment for a Horse: The Athlete shall be subjected to the sanction of elimination and yellow warning card, and the Trainer shall be subjected to a fine not less than AED 5,000. Furthermore, if the same person is found guilty of repeating similar offence, he/she shall be subjected to severe sanction.

8. TRAINER AND ATHLETE PENALTY POINTS

- 8.1 10 Penalty Points shall be awarded to the Trainer and Athlete should their horse be eliminated due to metabolic reasons.
- 8.2 25 Penalty Points shall be awarded to the Trainer and Athlete should their horse be eliminated due to Serious Injury (metabolic) reason
- 8.3 In case the horse is eliminated due to a catastrophic injury, the Athlete & Trainer shall receive 80 penalty points in addition to a fine not less than AED 50,000 and suspension for two months to be imposed on the Trainer. A blood sample shall be taken from the horse to be checked for doping, prohibited drugs and control. In case the result is positive, doping sanctions shall apply to the Trainer.
- 8.4 Catastrophic injury is defined as any injury, which causes death of a horse or requires the immediate euthanasia.
- 8.5 In case the horse is eliminated due to Serious Injury(musculoskeletal), the Athlete & Trainer shall receive 80 penalty points
- 8.6 If a Horse is participating in a CEI or CEN Event during the MOOCP, the Trainer and Athlete shall respectively receive 100 penalty points, in addition to a fine not less than AED 25,000 to be imposed on the Trainer and Athlete and any person is found guilty and caused this matter.
- 8.7 If a Horse is not brought to the Final Veterinary Inspection the Trainer and Athlete each will receive 100 penalty points.
- 8.8 Incorrect behaviors towards (a) Event Officials or any other party connected with the Event (other Athlete, journalist, public etc.) and/or (b) Doping Control Officers, Testing Veterinarian, Chaperones and/or any other person involved in the collection of a doping control sample will entail a penalty of 100 points.
- 8.9 In addition to the sanctions hereinabove set forth, other sanctions may be applied by the Federation.
 - 8.9.1 Athlete: The penalty points set forth in Article (8.1, 8.2 and 8.3) shall be accumulative. In case the Athlete receives 100 penalty points, the Athlete shall be suspended for two months.
 - 8.9.2 Trainer: The penalty points set forth in Article (8.1, 8.2 and 8.3) shall be accumulative. In case the Trainer receives 300 penalty points, the Trainer shall be suspended for two months.
 - 8.9.3 In case of suspension of the Trainer, the horses shall not be transferred to the name of another trainer until settlement of the fine amount, provided that any other sanctions shall be applied to the Trainer.
 - 8.9.4 If a Horse ridden by an Athlete suffers a Catastrophic Injury within 12 months of a Catastrophic Injury occurring to any previous Horse ridden by the same Athlete, that Athlete shall be automatically suspended for six months.
 - 8.9.5 If any 3 horses, under supervision and training of the same Trainer, suffers a catastrophic injury within 12 months, the Trainer shall be suspended for six months in addition to any other sanctions.
 - 8.9.6 Catastrophic injury is defined as an injury which causes death of a horse or which requires immediate euthanasia.
 - 8.9.7 As compared to one Athlete to one horse in an event; one Trainer may have many horses competing in the same event.
 - 8.9.8 Penalty points are accumulated from the first penalty rolling forward for a period of 12 months. Thereafter on the first anniversary of each point penalty such penalty is dropped from the running total.

9. REGISTRATION AND LICENSES

- 9.1 **The Athlete**
 - 9.1.2 Athlete must be registered with the Endurance Department of UAEERF before he/she can enter in a National or International Endurance Event or an UAEERF Qualification Ride sanctioned under these Rules.
 - 9.1.3 Athlete entered in an invitational National event by a foreign Federation is exempt from the requirement under 8.1. However, the Athlete will be subject to all other provisions under these Rules.
 - 9.1.4 A foreign national athlete should provide a written permission from his/her National Federation at the time of registration.
 - 9.1.5 After having satisfactorily completed the specified number of UAEERF or equivalent Qualification Rides, an Athlete will be issued with an Athletes' License for the current UAE Endurance Season. The license must be renewed for each subsequent season.
 - 9.1.6 A qualified and experienced Athlete who can provide authentic proof of performance will be issued a license.

9.1.7 By submitting an online registration, the applicant will be deemed to have agreed to all the provisions under these Rules and upon his registration with the FEI, to the relevant Rules of the FEI, during the period of registration.

9.2 The Trainer

9.2.1 A Trainer registered with the Endurance Department of UAEERF should be 21 years and above with good knowledge of national and international endurance rules, with a minimum endurance training experience of one year and pass the required exam before he/she can be permitted to enter in a National or International Endurance Event or an UAEERF Qualification Ride sanctioned under these Rules. see annex 6 requirement for trainer license.

9.2.2 A foreign national trainer should provide a written permission from his/her National Federation at the time of registration to obtain a trainer's license.

9.2.3 Assistant Trainer must be registered with the Endurance Department of UAEERF before a horse in his/her charge can be permitted to take part in a National or International Endurance Event or an UAEERF Qualification Ride sanctioned under these Rules.

9.2.4 A horse entered by a foreign Federation in an invitational National event or in an international event is exempt from the requirement under 9.1.

9.2.5 By submitting an online registration, the applicant will be deemed to have agreed to all the provisions under these Rules.

10. THE STABLE VETERINARIAN/ATHLETE PRIVATE VETERINARIAN

10.1 A Stable Veterinarian or Assistant Veterinarian must be registered with the Endurance Department of UAEERF before a horse in his charge will be permitted to take part in a National or International Endurance Event or an UAEERF Qualification Ride sanctioned under these Rules. In submitting an online registration, the applicant will be deemed to have agreed to all the provisions under these Rules.

11. THE UAE ENDURANCE CALENDAR

11.1 UAEERF shall take steps to produce a UAE Endurance Calendar by sending invitations and reminders to recognized and approved OCs who must submit their first draft of proposed dates by the end of May. Request for any additional National events to be included in the UAE Endurance Calendar must reach the UAEERF preferably 3 weeks before the proposed date. Acceptance of any late addition will be at the discretion of the UAEERF.

11.2 Special care must be taken to avoid a clash of dates involving well established, traditional rides, viz. HH The President's Cup, the National Day Cup at Al Wathba, Abu Dhabi, HH Sheikh Mohammed bin Rashid Al Maktoum Cup, the Dubai Crown Prince Endurance Cup in Dubai and HH The President's Cup for Junior and Young Athletes and HH Sheikh Sultan bin Zayed Festival of Endurance at Boutheib Endurance Village, Abu Dhabi.

11.3 UAEERF shall then collate the information and prepare the first draft of the UAE Endurance Calendar for the forthcoming season and send copies to the OCs. After further discussions, the endurance calendar shall be finalized and placed on the UAEERF website no later than 1st September. It shall be generally made available to the endurance fraternity and to all concerned as early as possible. The endurance calendar shall contain a list of endurance events to be held in the UAE during the season (October – April). The list must state the venue, date, level and distance of each competition/ qualification ride along with other necessary details. UAEERF shall announce any subsequent change or amendment to the list in similar manner, as and when such change occurs.

11.4 ENTRIES

11.4.1 Attempt of cheating such as substitution of an Athlete or change of the horse which is unauthorized to participate in the race:

11.4.2 Change of Athlete: The Athlete shall be subjected to the sanction of elimination and yellow warning card, and the Trainer shall be subjected to a fine not less than AED 5,000. Furthermore, if the same person is found guilty of repeating similar offence, he/she shall be subjected to severe sanction.

11.4.3 Change of Horse: The Athlete shall be subjected to the sanction of elimination and yellow warning card, and the Trainer shall be subjected to a fine not less than AED 25,000. Furthermore, if the same person is found guilty of repeating similar offence, he/she shall be subjected to severe sanction.

11.4.4 Entries can only be made online through the UAEERF Online System by an UAEERF registered owner or trainer or athlete or by an authorized agent or OC. For any entry to rides in the UAE, the horse, the trainer, the athlete and the Stable vet must be registered with the UAEERF. By entering the Competition, the Owner of the Horse consents to veterinary treatment that, in the opinion of the Treating Veterinarian (s), is required to ensure the welfare of the Horse, and to the transport of the Horse to the designated referral facility for further assessment, care, or monitoring should that be deemed necessary.

11.4.4.1 Organizing Committees must submit the following to UAEERF within 24 hours:

11.4.4.2 Results in pdf and excel FEI format including the Vet card information.

11.4.4.3 Copies of vet cards and treatment cards

- 11.5 Foreign federations shall use the established methods to enter their competitors in endurance events in UAE. The entry must be made before the advertised closing.
- 11.6 A horse must at least be of the prescribed minimum age and suitably qualified for the level of competition for which it is entered. It must also fulfill all other conditions stated in the approved schedule of the competition and/or on the official entry form if any.
- 11.7 Unless it is specifically stated otherwise to enter in a national ride restricted to private owners: the horses must be the registered property of a private owner for at least 60 days prior to the event date. (Art.5.14)
- 11.8 Substitution of a horse or an athlete listed on the list of entries will be permitted up to 1 hour before the advertised start time. There will be no charge for the substitution where a valid veterinarian's certificate or a medical officer's certificate is submitted.
- 11.9 Late entry and /or substitution of horse or athlete NOT LISTED on the list of entries will be permitted only up to 1 hour before the advertised start time with payment of a fee (See art. 34.1.15 of National Rules).
Every late entry/substituted horse or athlete must satisfy the conditions of entry.
- 11.10 The required minimum number of entries in a National event is preferably 20. The UAEERF, in consultation with the OC, has the authority to restrict the entries to ensure the safety and well-being of the horse and other personnel involved in the event.

12. THE RIDE AND TECHNICAL INFORMATION SHEET AND TRAIL MAP

- 12.1 The OC in consultation with the UAEERF shall provide a specific Technical Information Sheet for each competition / qualification ride giving detailed ride information including the level of the competition, date and time set for the first inspection and start of the ride, the minimum speed (and maximum speed where necessary) allowed, vet gate closing times and the maximum riding time permitted, compulsory hold times, the order and distance of the phases (routes) comprising the ride, the color of route flags, the time set for the Best Conditioned Horse selection and any other pertinent detail.
- 12.2 No phase (route) of a national competition shall be longer than 40km and be less than 20 km.
- 12.3 The hold for all phases must meet a minimum ratio of 1 minute per 1 km, ie: following a 35 km phase, a minimum hold time of 35 minutes.
- 12.4 In every national competition there shall preferably be at least one hold not shorter than 40 minutes.
- 12.5 A ride over 140 km or above in multi days must have at least one hold not shorter than 50 minutes.
- 12.6 Where a compulsory recovery inspection is specified, the hold time must be at least 40 minutes.
- 12.7 The finish must be long and wide enough to enable several horses to finish at speed without interfering with each other and must provide sufficient run-out to allow competitors to safely come to a stop after crossing the finish line in any potential sprint or gallop. It must be situated as close to the Vet Gate as possible.
- 12.8 A map of the trail in a scale of at least 1:50000 shall be provided.

13. THE RIDE VENUE

- 13.1 Competition stables, veterinary clinic, and training area/trail
- 13.2 The OC in consultation with the UAEERF shall make all necessary arrangements to receive horses arriving at the venue to take part in the competition/qualification ride. These will include suitable arrival enclosures, downloading ramps (if necessary), quarantine barns (if necessary), secured competition stables (cleaned with fresh bedding and water supply), and of a veterinarian, a farrier and a medical doctor on call. There must be arrangement in place to provide emergency help should the need arise.
- 13.3 Competition horse boxes should be at least 3 x 3 meters and must have clean bedding and supply of electricity.
- 13.4 Competition stables must have adequate fire-fighting equipment and insect/reptile protection (if necessary)
- 13.5 A competition veterinary clinic and field laboratory with appropriate equipment and staff must be available once the horses begin to arrive at the competition venue.
- 13.6 The veterinary clinic must have an entrance and exit wide enough for a trailer carrying an injured horse to come in easily.
- 13.7 There must be a special enclosure to collect urine and blood samples from horses under the medication control protocol.
- 13.8 The OC must provide training area/trail for horses with due regard to quarantine requirements (if necessary). Training times must be specified and each group must be accompanied by a Steward while on the trail (if necessary).
- 13.9 Whenever mounted, athletes must wear a hard type athlete's helmet and tie the chin strap and wear shoes with heels of 12 mm or more unless they are using caged or equestrian safety stirrups.
- 13.10 All concerned must maintain the decorum of the event and uphold the principles of good horsemanship.

14. THE CENTRAL VET GATE

Layout and function

- 14.1 The Vet Gate into a timed hold is the control center of an Endurance competition. It is made up of a arrival line, a preparing and cooling area, a horse inspection area, sheltered crew bays for horses to eat and rest during a compulsory hold and a departure line. It should also have restrooms and a possibility to treat distressed horses.
(Please see the provided layout of a typical endurance village in UAE.)

- 14.2 The Central Vet Gate is a construction where all inspections during a ride will be done. Additional to the basic requirements it could have media and ride information centers, spectators' viewing tribunes, restaurants and cafeterias, exhibition enclosures, restrooms, prize ceremony arena etc.
- 14.3 The "field of play" is referred to; the defined course (loops or phases), the crewing areas on course or within the Vet Gate, the Vet examination area and the hold area at or within the Vet Gate.
- 14.4 While preparing the trail or course; the Course Designer or Technical Delegate must not specially design the course/trail for speed that may increase the risk of injury to the Horse.
- 14.5 The CD or TD must make sure that the course or trail must remain the same with the naturally occurring or manmade features or the challenges throughout the event.
- 14.6 Maximum number of Crews / Grooms allowed:
- 14.6.1 Number of grooms allowed will be Four per Horse to consider the availability of space. The number may be further restricted by the OC under advice from the Technical Delegate or the Ground Jury. Such restrictions must be clearly shown in the UAEERF approved schedule. The right of the groom to access the Examination area is lost upon removal of the applicable Horse from the Competition.
 - 14.6.2 In case the Crews / Grooms are provided with the Vest; such vest must be returned to the registry office as soon as the concerned Horse is declared out of the competition.

15. VETERINARY CONTROL

- 15.1 The Veterinary Commission has absolute control on all matters concerning horse welfare.
- 15.2 The FEI Veterinary Regulations apply to all International Endurance Rides.
- 15.3 A series of examinations and inspections required by these Rules are established in the interest of the health, safety, and welfare of the horse in the competitions.
- 15.4 The decision of the Ground Jury taken on the direct advice of the Official Veterinarians is final and there can be no appeal against them. However, the Ground Jury is obliged in all cases to provide the reasons for the elimination of any horses.
- 15.5 Should an entered horse die for any reason during the period between the first inspection and the final inspection, the Foreign Veterinary Delegate will assist the Ground Jury to write, a report on the circumstances to the UAENF which shall be filed with the FEI Veterinary Committee for review of circumstances. Postmortem report, EADCMO should be performed.
- 15.6 Should a horse that has competed die for any reason within a set period following a event, Postmortem report, EADCMO should be performed.
- 15.7 Only athletes whose horses have passed all the inspections and examinations are entitled to be classified in the final list of results.
- 15.8 After each National Endurance event details of a horses' completed distance to the nearest vet gate, grounds for non-classification (metabolic, irregular gait or both), treatment at the venue, referral for hospitalization, mandatory rest periods and any other comments necessary to protect the horse's future competition safety and welfare deemed necessary by the veterinary commission must be recorded either in the horses' passport or National Passport Logbook. Only the Veterinary Delegate, the President of the Ground Jury and Appeal Committee can make entries in the official record.
- 15.9 All the relevant information required at the inspections and examinations must be recorded on an individual veterinary record for each combination and must, in principle, be available at all subsequent inspections and examinations. Such records being produced electronically (with back up) or by hard copy. Athletes are entitled to see and copy the record referring to their horses immediately after the inspection and examination. Veterinary cards may be retained by the Organizing Committee. Veterinary cards in respect of horses that have received immediate invasive treatment must be sent to the FEI by the event Foreign Vet Delegate together with details of such treatment provided.
- 15.10 The arrival time into the Vet Gate must be recoded and the horse must be presented within the presentation time according to these Rules and as confirmed in the schedule to the Veterinary Commission for inspection.
- 15.11 The compulsory halts are operated by establishing a vet gate with an inspection area that the Athletes/grooms enter with the horse when they decide that the horse is ready to pass the veterinary inspection. When the Athlete/groom enters the inspection area, they must proceed with the horse directly to the nominated vet at a reasonable pace showing constant forward motion. No more than three people can accompany an individual horse within the inspection area, and that number may be further limited by schedule or pre-announced decision of the GJ.
- 15.12 During this period, the horse may be inspected more than once if the Veterinary Commission or Ground Jury so decides. However, before the scheduled presentation time has elapsed, the horse, must demonstrate its fitness to continue which is assessed upon three criteria: heart rate recovery, metabolic stability and gait.
- 15.13 These inspections for heart rate recovery, metabolic stability and soundness must be conducted at the same time and the horse must meet the minimum criteria for the Star level of the event. If there is any alteration to how the inspections will be conducted, that must be announced prior to the competition by the GJ or published in the Schedule.
- 15.14 Once the horse has successfully met the required heart rate parameters its timed hold, starting from the moment the horse was presented to the Veterinary Commission, continues for the stated period. During the timed hold, all the other aspects of the inspections, including trotting the horse, will be carried out.

- 15.15 The Technical Delegate or the Ground Jury together with the Veterinary Commission can decide to modify the timed holds according to extreme weather conditions or other exceptional circumstances.
- 15.16 The Organizing Committee, the TD, the President of the Veterinary Commission, the Foreign Vet Delegate and the PGJ are required to provide for appropriate aftercare and veterinary treatment controls including arrangements with an equine referral facility with surgical capabilities.

16. VETERINARY INSECTIONS AND EXAMINATIONS OF HORSES

16.1 Veterinary Examination

- 16.1.1** The first examination shall take place as soon as possible after the arrival of the horses at the stables of the Ride and definitely before the horses are released to their assigned stables
- 16.1.2** It should be performed by an official veterinarian appointed by the Organizing Committee and, if not available, by a Veterinary Surgeon of the UAE. The PGJ and FVD should be present whenever possible. The aim is first to establish the horse's identity (passports, registration documents, etc.) and second, to establish the general health of the horse, and in particular, to identify any contagious conditions.
- 16.1.3** Doubtful conditions should be reported to the Foreign Veterinary Delegate or Ground Jury on arrival, but in any case, not later than one hour before the first inspection.
- 16.1.4** Veterinary inspection in case of visible blood: If blood is visible on a Horse during a Horse Inspection, the Horse must be examined by a panel of three Veterinarians. If the panel of Veterinarians determines (i) that the Horse has free-flowing blood from an injury or orifice, or (ii) that continuing in the Competition will in any way endanger (or risk endangering) the welfare of the Horse, the Horse must be designated as Failed to Qualify. The Horse may continue in the Competition only if the panel of Veterinarians determines that the blood is not free-flowing and that continuing in the Competition does not in any way endanger (or risk endangering) the welfare of the Horse (for example, where the Horse suffers a minor scratch from a tree branch). The Veterinary Delegate must report any blood visible on the Horse (regardless of the panel's determination) in the Veterinary Report for the Event, including the Horse's FEI/UAEERF registration number, a description of the injury, a photograph of the injury, the determination of the panel with reasons, and the names and FEI / UAEERF registration numbers of each of the three panel members that examined the Horse). Other veterinary inspections: The Veterinary Commission or Ground Jury may select any Horses at random at any time to submit to a Horse Inspection during the Competition.

16.2 Horse Inspections:

- 16.2.1** First Inspection: In principle, it should take place on the day preceding the start of the competition and is performed by the Veterinary Commission, together with the Ground Jury. It will be conducted according to the standards for all inspections, as outlined below, to include: Heart Rate, Respiratory System, General Condition and Metabolic Status, Gait Evaluation, soreness, Lacerations, wounds, Range of Motion and other matters and items which from time to time may be added to the Veterinary Card.

- 16.2.2** Inspections Generally: There are no differences between the Veterinarians responsibilities to evaluate a horse at all inspections. The same standards apply to judging fitness to continue both metabolically, heart rate and in terms of gait evaluation.

16.2.3 Inspection Decorum:

- 16.2.3.1** The inspection areas should remain politely quiet in respect to Athletes and horses under the stresses of intense competition, and the GJ and Stewards are responsible to enforce that decorum. At the same time Athletes and their crews or owners or Team Staffs are also responsible to respect the nature of what is occurring there, the inspection and evaluation of the ongoing health and fitness to continue of horses under stressful physical demands. As a result, no gamesmanship will be tolerated in terms of delaying or interfering with a fair presentation.

16.2.3.2 Decorum during Horse Inspections:

- 16.2.3.2.1** The Ground Jury, Stewards and Veterinary Commission members are responsible for enforcing the Horse Inspection decorum.
- 16.2.3.2.2** Horses must be presented for inspection in a bridle or head collar, but without any other tack, including saddle, boots, fly masks, Blinkers/visors, and other tack. The tack must be removed in the recovery area before entering the Vetting Area. If there has been any topical application of any kind to the skin of the Horse, the Veterinary Commission will require that it be removed before the Horse may be presented for the Horse Inspection.
- 16.2.3.2.3** If a Horse is presented at the Vetting Area with tack on (other than the bridle or head collar) or any topical application of any kind to the skin that has not been removed further to instructions of the Veterinary Commission, then that Horse will fail the first presentation. The time into the Vetting Area will be cancelled and the Horse will be required to exit the Vetting Area and present for a second (final) presentation (except that there shall be no opportunity to re-present at the Final Horse Inspection).
- 16.2.3.2.4** Horses presented for vetting must proceed, as instructed, directly from the Vetting Area entrance to the designated Veterinarian in the vet lane (as instructed by the Stewards) showing constant forward motion. No action may be taken to hold back the Horse or to prevent the constant forward motion of the Horse. The Horse may not enter the vet lane until its heart rate has been assessed, and may not be trotted until so instructed by the relevant Veterinarian. In the event of breach of this provision, the Athlete will be given a fixed time penalty of five minutes and/or an Endurance Yellow Warning Card.
- 16.2.3.2.5** No gamesmanship will be tolerated in terms of delaying or interfering with a Horse Inspection. From time to time.

- 16.2.3.2.6 Prohibited conduct in relation to the heart rate assessment includes kneeling in front of the Horse, pulling the Horse's head down, feeding the Horse, or in any way touching the Horse to attempt to influence the outcome of the heart rate assessment. See ANNEX 9: Decorum During Horse Inspections
- 16.2.3.2.7 Prohibited conduct in relation to the presentation of the Horse for the gait assessment includes unduly restricting the Horse's head movement and/or encouraging the Horse to trot.
- 16.2.3.2.8 Repeated failure to present a Horse properly for the gait assessment may result in a Horse being designated as 'Failed to Qualify' as set out under paragraph 9.7(d) above. Whistling or any other behavior within the Vetting Area to encourage a Horse to urinate is prohibited.
- 16.2.3.2.9 Failure to comply with the Horse Inspection decorum, or the list of prohibited conduct that may be provided, may result in Disqualification or other disciplinary action and/or such other measures as the Ground Jury and Stewards consider appropriate in the circumstances. The Ground Jury and Stewards have a wide margin of discretion to determine what steps are appropriate in relation to any misconduct during Horse Inspections.

16.2.4 Stethoscope Examination

- 16.2.4.1 When the Horse is presented for inspection, the stethoscope is applied to the left side of the chest wall at approximately the level of the elbow.
 - 16.2.4.2 The examiner should locate the best position to auscultate the heart i.e., where the heart sounds are clearly audible.
 - 16.2.4.3 A stopwatch must be used to time the count.
 - 16.2.4.4 The stopwatch is started when the heartbeat is audible, and the count starts on the next heartbeat. The stopwatch can be stopped at 15 seconds if the count is 16 or less, at 30 seconds if the count is 32 or less. In both cases the heart rate can be recorded at 64 bpm or less. The Inspection can then be completed.
 - 16.2.4.5 If the heart rate is above 16 beats or 32 beats at 15 or 30 seconds respectively or if the heart beat is irregular, difficult to hear or demonstrates murmurs, the count must be continued for the full minute. The Horse may be re-inspected or fail to qualify for the next phase.
 - 16.2.4.6 At the first Vet Gate after the halfway point on the course or at the third Vet Gate (whichever comes first), and at each subsequent Vet Gate, Horses that present at the Vetting Area with a heart rate greater than 68 bpm at the first presentation must pass a heart rate re-inspection and a compulsory re-inspection before being permitted to start the next Loop.
 - 16.2.4.7 Cardiac Recovery Index is recorded at each inspection and involves the examination and recording of the heart rate as part of the metabolic assessment of the horse. Once the heart rate has been recorded the stopwatch is restarted and the horse has one minute to trot 80 m (40 out and 40 back) allowing for a gait assessment. At the end of the minute a second heart rate is recorded. The difference between the first and second heart rates is the Cardiac Recovery Index. The initial heart rate recording may be using a stethoscope (as described above) or with an Approved Electronic Heart Rate System.
 - 16.2.4.8 The second heart rate recording of the CRI must be with a stethoscope. At this examination, the heart rate is recorded for up to one minute and the cardiac cycle is examined for any pathological signs that may indicate that the horse is unfit to continue.
- 16.2.5 Compulsory Re-Inspections:** The Veterinary Commission, in consultation with the Ground Jury, will establish at which Vet Gates they will require horses to be presented for a compulsory re-inspection., no earlier than 15 minutes before that athlete's scheduled departure time from the Vet Gate.
- 16.2.6 Requested Re-Inspections:** The examining veterinarian may ask an Athlete to present their horse for re-inspection during its hold time and no earlier than 15 minutes prior to departure if after passing the horse, the veterinarian retains concerns about the horse's continuing stability. This rule is in place to provide the benefit of the doubt for the opportunity to continue to the horse.
- 16.2.7 Vet Gate Inspection:** The first mandatory inspection of the horse at the end of each phase.
- 16.2.8 Heart Rate Re-Inspection:** If during the Vet Gate Inspection, the horse's heart rate is higher than the parameters defined for that inspection the horse may be presented a second time within allowed him as defined.
- 16.2.9 Heart Rates:** Horses with abnormally high heart rates, or heart rates higher than the parameters defined in the schedule or as amended by the Ground Jury upon recommendation from the Veterinary Commission, will not be allowed to continue in the competition and will be deemed to have failed to qualify for the next phase. Any abnormal heart sound must be recorded. For a horse to fail to qualify for the next phase on heart rate a second veterinarian must immediately confirm that the horse's rate is above the parameter defined in the schedule. And second machine if electronic is used.
- 16.2.10 Respiratory System:** Abnormalities in rate or character of the breathing deemed by the Veterinary Commission to be of such a nature as to endanger the safety of the horse will be cause for failure to qualify for the next phase.
- 16.2.11 General Condition and Metabolic Status:** Horses in a generally poor condition or with an abnormally high temperature will fail to qualify for the next phase.
- 16.2.12 Metabolic status:** The metabolic status will be assessed by the examination and recording of those parameters that indicate the horse's fitness to continue including (but not exclusive to) mucous membranes, capillary refill time, hydration, intestinal cavity, demeanor, and cardiac recovery index. Failure to qualify for the next phase, for metabolic status, soft tissues injuries

or other reasons will require a review by a three- vet panel who will, by secret individual vote for a pass or fail, communicate their vote directly to a member of the Ground Jury.

- 16.2.13 **Irregularity of Gaits:** At the first or final inspection or any inspection during the course, a horse with a irregularity of gait: which must be consistently observable at trot, or an equivalent gait; and is observable through evaluation by trotting the horse on a loose lead in hand straight out and back, without prior flexion or deep palpation; which must be observed to cause pain, or threaten the immediate ability of the horse to safely perform athletically will be removed from competition and will fail to have qualified for the next phase.
- 16.2.14 The inspection must be run on a flat firm surface.
- 16.2.15 If, after having once trotted the horse, the observing Veterinarian questions the horse's fitness to continue, the horse will be re-trotted by a three-vet panel who by a secret individual vote opt for a pass or a failure and communicate their vote directly to a member of the Ground Jury.
- 16.2.16 Any of the three veterinarians can call for a further trot up prior to voting if they so wish, giving the horse and the Athlete the benefit of the doubt, and will communicate that request to the member of the Ground Jury present who will request the horse be trotted again. The ultimate decision based on the majority vote from the three veterinarians, independent and without discussion, will be then final.
- 16.2.17 However, the panel is still unable to conclude based upon 3 attempts (one by the original examining veterinarian and twice by the panel) that the horse is fit to continue whether it is because of a presentation failure or according to veterinary criteria, the horse will be eliminated.
- 16.2.18 Any unusual gait of the horse must be noted on the veterinary card of the horse, whether it is deemed grounds for eliminated or not.
- 16.2.19 **Soreness, Laceration and Wounds:** Any evidence of soreness, lacerations and wounds in the mouth, on the limb and on the body, including girth and saddle galls, must be recorded. If participation in or continuation of the competition is bound to seriously aggravate any such soreness, lacerations or wounds the horse will not be allowed to continue.
- 16.2.20 **Shoes and Feet:** Horses may be ridden without shoes, but if shod they must be correctly shod, and the shoes must be in a suitable condition for the competition. Horses which are shod at the first inspection may cross the finish line without one or more shoes. Equi-boots and pads are allowed. However, in all cases, the ongoing condition of the horse's feet and its adverse effect on the horses' immediate ability to perform athletically or which is observed to be causing the horse pain in proceeding shall mean the horse has failed to qualify for the next phase.

16.3 Individual Veterinary Cards:

16.4 Individual Veterinary Cards (Vet Cards) must be issued before the first inspection and be completed after each inspection.

16.5 **Final Inspection:**

- 16.5.1 At the final inspection, the first trot up of all horses must be in front of a panel of three members of the Veterinary Commission. A member of the panel may ask to see the horse trot only one more time before voting takes place.
- 16.5.2 To qualify for presentation to the Veterinary Commission at the final inspection the horse's heart rate must have attained 64 bpm or less within 20 min (or the parameters as detailed in the schedule) or crossing the finish line. Horses that do not meet these criteria will not be classified and must still be presented to the Veterinary Commission for inspection within 30 minutes after crossing the finish line.
- 16.5.3 Failure to comply with the time limits for presentation of the horse to the vetting area will result in disqualification. In such circumstances, the horse must be submitted to a horse inspection and so an additional designation for Failure to Qualify for veterinary (or other) reasons may also apply in addition to the Disqualification.
- 16.5.4 In any case, pulse must be taken and registered on the vet card within the time limit shown the schedule.

16.6 The final Inspection is to determine whether the horse is still fit to continue, to be ridden after a normal rest period for another full phase and it will be performed in the same manner as previous inspections with the same control and criteria as the inspections during the course with the exception that only one opportunity to qualify for presentation is allowed. Each horse shall also be checked against its vet card. At the Final Horse Inspection, the horse may be presented only one time. Horses that do not meet the maximum heart rate parameters at this presentation will be designated as Failed to Qualify.

16.7 At all endurance Competitions of over 140 km in one day or of an average 100 km on 2 or more days, all competing horses must remain in the stable area of the ride to stay under veterinary supervision for a period of hours after the finishing time as established by the Veterinary commission.

16.8 Other

Inspections:

Other inspections may be carried out by the Ground Jury or the official veterinarians on all or any horses selected at random at any time during the competition.

17. BEST CONDITION AWARD

- 17.1 The OC may organize a Best Condition Award at all National Endurance Events
- 17.2 The purpose of this award is to find the horse which is the best condition having completed the event and been classified among the best horses (maximum the first ten horses)
- 17.3 A horse can only be entered in the Best Condition Award if it successfully completes the competition in a riding time which is an additional percentage of the winning time, to be decided by the Ground Jury.
- 17.4 Horses which enter the Best Condition Award are deemed to be still in the competition until after the prize giving ceremony for the Best Condition Award.
- 17.5 The procedure laid down in the Endurance Notes for Guidance should be used to establish the Best Condition Award. All entrants in the Best Condition Award remain subjected to medication control.

18. VETERINARY TREATMENT DURING COMPETITION

- 18.1 Veterinary treatment may not be administered to a horse during the competition without the written approval of the Veterinary Commission. Authorization treatment does not affect classification of the horse.

19. WEIGHT CONTROL

- 19.1 Weight Control: The Athlete shall be weighed (when required), and if necessary, the Athlete shall be weighed with all the riding equipment (except the bridle) prior to start. The weight shall not be less than the required minimum weight when the Athlete is required to carry out the weight process. The Athlete must always maintain the minimum riding weight while completing Loops of the course (including while riding or leading the horse on the course).
- 19.2 Under these Rules the recommended minimum riding weight to be carried is:
 - 19.2.1 60kg in Ladies competitions
 - 19.2.2 70kg in open National competitions
 - 19.2.3 75 kg in open National competitions over 140 km or above.
 - 19.2.4 60 kg in Junior and Young Riders competition
 - 19.2.5 There shall be no minimum weight in UAEERF Qualification rides.
 - 19.2.6 Any modification in the minimum weight is at the discretion of the National Federation, based on the request of the Organizer after the approval of PGJ.

20. DRESS CODE AND SADDLERY

- 20.1 Equipment: Any Athlete, Trainer, Team Vet and/or any employee is found or reported guilty of any use of the prohibited equipment such as whips, electric shock device, ear plugs ..., the Athlete shall be subjected to elimination and yellow warning card, and a fine not less than AED 5,000 shall be imposed on the Trainer. Furthermore, if the same person is found guilty of repeating similar offence, he/she shall be subjected to severe sanction.
 - 20.2 In case of manipulation in the weight, the Athlete shall be subjected to elimination and yellow warning card, and the Trainer shall be subjected to a fine not less than AED 5,000. Furthermore, if the same person is found guilty of repeating similar offence, he/she shall be subjected to severe sanction.
 - 20.3 The athlete will be issued with a ride number vest which must be worn as long as he/she stays in competition.
 - 20.4 Athletes and officials must dress in a modest and appropriate manner, respectful of the decorum of the event.
 - 20.5 Saddlery must be in safe condition and should fit the horse. The horses' ears should be free of any inserts or attachments. Ear of horses should not be clogged. Ear plugs are forbidden. Blinkers may be allowed but must permit full forward vision, without modification and must be removed before entering the vet gates for examination. Any FEI notification regarding the use of Blinkers (if any) shall be applied to all National Events.
- 20.6 TACK AND EQUIPMENT (please refer to Annex # 7.0)
- 20.6.1 Tack Condition: Horse tack must be in a safe condition and correctly fitted to avoid the risk of pain or injury to the horse. Officials may require any ill-fitting to be removed or altered.
- 20.7 Permitted:
 - 20.7.1 A correctly fitted bridle and saddle are required on the course.
 - 20.7.2 Gags and 'bitless bridles' are permitted
 - 20.7.3 Martingales are permitted, provided that they do not unduly restrict the free movement of the head of the Horse.

- 20.7.4 Reins must be attached to the bit or (for bitless bridles) directly to the bridle.
- 20.7.5 Any shank (lever arm) on any bit may not exceed 8 cm.
- 20.7.6 Leather or plastic nosebands are permitted. A noseband may never be so tightly fixed that it risks causing (or causes) irritation to the skin. It must be adjusted to allow at least two fingers under the noseband on the front of the nose.
- 20.7.7 Cheek pieces (meaning two strips of sheepskin or similar material that is attached to the cheek pieces of the bridle) are permitted. See Annex 8 for a diagram.
- 20.7.8 Unless specified otherwise in the Competition Schedule, Blinkers and visors (similar to Blinkers, but with holes cut in one or both cowls permitting limited side or rear vision) are permitted, provided that they allow full forward vision without any interference. They must be removed during Horse Inspections. See Annex 8 for diagrams showing permitted/prohibited variations.
- 20.7.9 Fly masks are permitted only if specifically authorized by the Ground Jury to take account of the local conditions, and provided that they
 - 20.7.9.1 do not unduly obstruct the Horse's vision or hearing,
- 20.7.10 do not serve any purpose other than to protect the Horse from insects, and are removed during Horse Inspections.
- 20.7.11 Equi-boots and pads are permitted.
- 20.7.12 Head collars are permitted only if the Horse can be adequately controlled and does not pose any safety risk to any person or other Horse. Otherwise (and in most cases) a bridle must be used.
- 20.8 Safety equipment, such as reflective items and helmet torches etc., may be required in rides starting or likely to end in darkness.
- 20.9 Hard type safety riding helmets must be worn by athletes when mounted with the chin strap fastened.
- 20.10 Athletes must wear shoes with heels of 12 mm or more unless they use caged or equestrian safety stirrups.
- 20.11 Prohibited tack/equipment: Use of the following is prohibited at all times on the Field of Play and in training areas:
 - 20.11.1.1 any type of rein that might unduly restrict the free movement of the head of the Horse, including draw (running) reins/French reins.
 - 20.11.1.2 rein additions such as handles;
 - 20.11.1.3 metal chain nosebands.
 - 20.11.1.4 whips (including any other item that is used as a whip);
 - 20.11.1.5 spurs.
 - 20.11.1.6 anything placed inside or covering the Horse's ears (for example, ear plugs or similar and ear bonnets/hoods), except for fly masks as set out in FEI ERs Article 825.2.9; and
 - 20.11.1.7 subject to FEI ERs Articles. 825.2.8 and 825.2.9, any material covering the Horse's eye(s) or otherwise obstructing the Horse's vision, including eye covers or eye shields (these are similar to Blinkers, but in place of the eye cowls, the eyes are covered with mesh or other transparent material or by an opaque cover). See Annex 8 for diagrams.
- 20.12 Whips (or the use of any other item as a whip) and Spurs are prohibited.
- 20.13 Athletes are responsible for maintaining their riding gear in good condition.
- 20.14 Dyes (Artificial) may not be used on the Horse at any time on the Field of Play as it may obstruct the veterinary inspection and identification of the Horse. Barrier cream or other topical skin cream may be used on the Horse, provided that it is removed before presentation for Horse Inspections or at the request of any Veterinarian or Official anywhere on the Field of Play. Failure to comply with this provision will result in Disqualification. However, any other natural materials that would preserve the health and safety of the horse such as Henna may be used in the horse skin from salty sand & humidity.

21. ON THE TRAIL

- 21.1 Endurance is a one athlete-one horse sport. No change is permitted once the ride has started.
- 21.2 An Endurance competition is against the clock and every competitor must travel on the assigned phase (route) and in the designated direction for safety reason and under penalty of disqualification.
- 21.3 Loops

Length of Course	Minimum number of loops
100 – 119 km	Three
120 --139 km	Four
140 – 160 km	Five

- 21.4 Colored markers/flags and or direction arrows will be fixed throughout each phase (route) of the trail. A distance marker shall be fixed at every 5 km. Watering and crew points (if necessary) shall be marked clearly on the trail. Water for horses must be available after every 5 km of trail.
- 21.5 There are also separate designated areas on the course at least every 10 km where drinking water will be provided for horses.
- 21.6 No national competition or qualification ride can start under these Rules unless all basic arrangements for the safety of horses and athletes are in place. These include among others, a working equine treatment clinic, human and horse ambulances, a properly marked trail with available water for horses and security arrangements. At all competitions of 160 km in one day or of an average of 100 km in 2 or more days, all competing Horses must remain in the stable area of the Ride to stay under Veterinary supervision until a period of hours after the finishing time as established by the Veterinary Commission.

- 21.7 Athletes must be mounted at the start and finish of a competition. In a multiple days' competition, the athlete must be mounted at the start of the day and the finish of the days' final phase.
- 21.8 The Maximum number of starters for each event may be a maximum of 200 starters per competition and a maximum of 400 starters per day. In a one-day ride the competitors should preferably begin together in a mass start. The National Federation may authorize the organizing committee to increase the numbers of starters taking into account the infrastructure, the capacity of venue, equipment, number of stables, clinic, timing system and heart rate systems, provided that the number of officials are proportional to the number of starters, after consultation with the PGJ.
- 21.9 Staggered starts are permitted in all national rides.
- 21.10 Precise timekeeping of each competitor's actual riding time shall determine the order of finish.
- 21.11 No competitor shall cross the start line before the start is given. If a competitor makes a start which is in any way false, under penalty of disqualification the competitor must return and re-cross the start line and with due regard to 21.8, below.
- 21.12 No competitor will be permitted to start later than 15 minutes after the competition/qualification ride has officially started.
- 21.13 The OC must make special arrangements to ensure that all possible help is available to competitors to stay on the right trail especially in bad weather or "force majeure"
- 21.14 Crew and drivers are warned against committing any act that results in giving unfair advantage to their competitor or in the abuse of the horse.
- 21.15 The horse cannot be led by any person other than the athlete while on the competition trail. No person or vehicle is permitted to travel on the designated trail either in front or behind or in close proximity to the horse.
- 21.16 Giving water or assistance from inside a traveling vehicle is forbidden.
- 21.17 Directions given by ride officials and police personnel on the trail must be obeyed by all the athletes and those related to the rides.
- 21.18 Permitted assistance will be limited to changing of damaged/broken equipment, re-adjustment of gear and in helping the athlete to remount after a fall or to fix a lost horseshoe and any other assistance deemed to be within bounds of common sense.
- 21.19 On the trail a tiring horse must give way to a competitor seeking to go ahead. Causing willful obstruction to a progressive competitor shall result in disqualification.
- 21.20 The competitors and all other concerned shall maintain the decorum of the event and uphold the principles of good horsemanship throughout the competition.
- 21.21 At the departure gate, athletes will strictly observe the official individual departure time. A force start shall result in the addition of the time gained and a warning of time penalty. Such action if repeated may result in a penalty of disqualification.
- 21.22 Forbidden Assistance:**
- 21.22.1** Providing and/or accepting an aid on any non-designated part of the course shall be subject to Yellow Warning card.
- 21.22.2** Accompanying or following on any part of the course or immediate adjacent access track by pedestrian or vehicle shall be subject to Yellow Warning card
- 21.22.3** Any assistance in encouraging a Horse on course or in trotting lane shall be subject to Yellow Warning card and/or penalty of disqualification.
- 21.22.4** Any kind of intervention giving advantage over other competitors shall be subject to Yellow Warning card and/or penalty of disqualification.
- 21.22.5** All Horses must remain at all times to be capable of being clearly observed by Veterinary Officials, Ground Jury and Stewards. No screens, no equipment or barrier of any kind may be used to prevent such observation under penalty of disqualification and a Yellow Warning Card.
- 21.22.6** Each Trainer and Athlete is responsible to ensure the proper supervision, care and feeding of any spare unused Horse during the course of their absence on Event Day.

22. IN THE VET GATE

- 22.1 Upon arrival at the vet gate from the trail, the horse will be led to the cooling area so that its pulse comes down to the prescribed limit and after the necessary crewing the team will decide to present the horse for inspection. The riding time will stop when the horse's entry into the vet inspection area is recorded.
- 22.2 Once inside the vet inspection area, the vet card must be collected and proceeded forthwith to the commission veterinarian, as directed. No gamesmanship will be tolerated in terms of delaying or interfering with a fair presentation.
- 22.3 If the horse's pulse rate is above the specified limit the horse must leave the vet inspection enclosure at once and re-enter for a second presentation with a new Vet-In Time. A second pulse inspection within the original presentation time is permitted at all vet gates except at the final inspection.
- 22.4 While inspecting horses during the ride, the Commission Veterinarians shall observe a set and well-established protocol.
- 22.5 The Best Conditioned Horse selection will be held approximately 1 hour after the first finisher has crossed the line. A maximum number of 10 horses to finish within the first hour shall be invited to participate. A panel of officials shall be formed to judge the Best Conditioned Horse and it shall follow a set and well-established protocol. However, the participation in the competition is voluntary.

23. THE GROUND JURY

- 23.1 The Ground Jury, GJ, refers to a panel of Officials appointed by the OC to supervise all arrangements made by the OC for the judging, veterinary control, and timekeeping of the event and for settling any dispute. The Ground Jury has overall control of the event and in matters affecting the welfare of the horse, the Veterinary Commission should be consulted.
- 23.2 The Ground Jury shall consist of a President and several Judges. Persons appointed to the Ground Jury must be suitably qualified and experienced. The OC must ensure that the appointments do not give rise to a conflict of interest.
- 23.3 The Ground Jury shall have jurisdiction from one hour before the first inspection until the last horse has completed the final vet gate protocol and the Best Conditioned Horse Selection.
- 23.4 Powers of the Ground Jury shall include:
 - 23.4.1 To issue a warning
 - 23.4.2 To disqualify the competitor from the event.
 - 23.4.3 To impose a fine of up to AED 25,000.
- 23.5 All major decisions taken by the Ground Jury must be that of the majority of members present. In case of a hung decision, the President shall have the casting vote.
- 23.6 An appeal for a reduction of the fine must be addressed to the Secretary-General.
- 23.7 A competitor once having been disqualified cannot be reinstated in the event.
- 23.8 In all national events, a member of the GJ, if suitably qualified and experienced may serve as the TD.
- 23.9 The President of Ground Jury must send a report to UAEERF within 24 hours after the ride.

24. THE TECHNICAL DELEGATE

- 24.1 The Technical Delegate, TD, must, in coordination with the Organizing Committee check and approve, in advance, the layout of the course. The Technical Delegate, where possible, should participate in the design of the course.
- 24.2 The TD must approve the technical and administrative arrangements for the conduct of the event: the examinations and inspections of horses; the accommodation of horses and athletes and the stewarding of the event.
- 24.3 The TD will supervise the athletes and the officials' briefings and the conduct of all technical personnel.
- 24.4 The TD will investigate all and report to and advise the Ground Jury on any decisions they are required to make.
- 24.5 Until the TD has reported to the Ground Jury that he is satisfied with all the arrangements, the authority of the TD shall be absolute. Thereafter the TD will continue to supervise the technical and administrative conduct of the event and will advise and assist the Ground Jury, the Veterinary Commission, and the Organizing Committee.
- 24.6 The TD shall write a report on the prescribed form touching all aspects of the event and including all pertinent details and send it to the Endurance Department of UAEERF for statistical use and for future improvements.

25. THE VETERINARY DELEGATE

- 25.1 The Veterinary Delegate (VD) shall be responsible for the appropriate application of the Rules in all veterinary matters.
- 25.2 The VD shall work closely with the OC, the GJ, the TD, the treatment vets and the Chief Steward to ensure that all arrangements are in place for the safety and welfare of the horse and for a fair and equitable competition.
- 25.3 Wherever possible the VD shall be the third member of the panel (with the lane vet and the President of the Veterinary Commission) required voting on the fitness of a horse presented for inspection.
- 25.4 The VD shall write an official detailed report on the prescribed form touching all pertinent details with regards to the irregularities and errors on horse passports, testing, fatalities any other veterinary matter ID documents etc. and send it to the Veterinary/Endurance Department of the UAEERF within 24 hours after the ride for statistical use and for future improvements.

26. THE VETERINARY COMMISSION

- 26.1 The Veterinary Commission, VC, refers to a group of qualified and highly experienced equine sport veterinarians appointed by the OC for the veterinary management of the event. The OC must ensure that the appointments do not give rise to a conflict of interest.
- 26.2 The VC shall comprise a President, a VD, and several vets. The VC shall observe a set and well-established protocol when inspecting horses.
- 26.3 A panel made up of the President of the Veterinary Commission (PVC), the VD (wherever possible) and the lane vet shall decide on the elimination of a horse due to reasons of soundness or disputed metabolic condition. The ballot shall be secret, and the voting slips shall be handed to a member of the Ground Jury to announce the majority's verdict.
- 26.4 Any of the three veterinarians can call for a further trot up prior to voting if they so wish, giving the horse and competitor the benefit of the doubt, and will communicate that request to the member of the Ground Jury present who will request the horse be trotted again. The ultimate decision based upon the majority vote from the three veterinarians, independent and without discussion, will then be final.

- 26.5 If the panel is still unable to conclude based upon 3 attempts (once by the original examining veterinarian and twice by the panel) that the horse is fit to continue, whether it is because of a presentation failure or according to veterinary criteria, the horse will be eliminated.
- 26.6 The President of Veterinary Commission must send a report to UAEERF within 24 hours after the ride.

27. THE STEWARDS

- 27.1 The panel of Stewards shall be appointed by the OC consisting of Chief Steward and a number of stewards. The OC must ensure that the appointments do not give rise to a conflict of interest.
- 27.2 The Chief Steward must be from the list of Endurance Chief Stewards maintained by UAEERF and shown on the official website.
- 27.3 Stewards must be registered with UAEERF, and they must be suitably qualified and experienced for the position.
- 27.4 The Stewards will ensure that all arrangements and directions put in place by the OC are given effect in a smooth and sensible manner throughout the event and in fairness to all competitors.
- 27.5 The Stewards shall have control over safety of the stables during the competition.
- 27.6 The Stewards shall liaise closely with all concerned (GJ, TD and VC) in investigating corrupt or fraudulent practice.
- 27.7 The Stewards shall ensure that competitors do not stray from the designated trail and properly complete the phases of the ride.
- 27.8 The Stewards shall work in close liaison with the OC, the Ground Jury, the Veterinary Commission and the other officials. Their motto shall be "Here to Help, Prevent and Intervene."
- 27.9 The stewards must ensure the smooth running of all defined functions such as opening and closing ceremonies or any required organized function within the competition.
- 27.10 The Chief Steward must send a report to UAEERF within 24 hours after the ride.

28. THE TREATMENT VETERINARIANS

- 28.1 The Treatment Veterinarians (TV) are highly experienced equine vets appointed by the OC for the immediate veterinary care of any competition horse. The OC must ensure that the appointments do not give rise to a conflict of interest.
- 28.2 The decision of the Chief Treatment Vet in consultation with PVC about treating a horse in distress at any point shall be final.
- 28.3 The Chief Treatment Vet must send a copy of the treatment cards together with his detailed report to the Veterinary/Endurance Department of the UAEERF within 24 hours after the ride and fill out Endurance Log In/Out form to be downloaded from www.UAEERF.ae - veterinary downloads.

29. THE LABORATORY TECHNICIANS

- 29.1 The Laboratory Technician shall assist the Treatment Veterinarian by providing reports of analyses necessary for the treatment of horses in distress.

30. THE FARRIER

- 30.1 A fully equipped Farrier shall remain available throughout the event.

31. THE TIMEKEEPERS

- 31.1 The Time keeping should be recorded by properly qualified personnel using synchronized time keeping methods.
- 31.2 The Timekeepers shall be appointed by the OC. Timekeepers shall comprise a Chief Timekeeper and several assistants. The OC must ensure that the appointments do not give rise to a conflict of interest.
- 31.3 The Timekeepers shall keep an accurate record of the start, arrival, vet-in time, pulse re-inspection time (where necessary), departure time and the time a competitor crosses the finish line.
- 31.4 The Chief Timekeeper shall work in close liaison with the PGJ and the PVC and keep them and the concerned parties informed of all-time violations during the competition.
- 31.5 The PGJ, the PVC and the Chief Steward must inform the Chief Timekeeper of all eliminations, retirements and of any time penalty or authorized time adjustment effected during the competition. In doing so, the concerned official shall ensure that the direction given to the Chief Timekeeper is confirmed in writing and under his signature, as soon as possible. A fully equipped and recognized Timing system can be arranged by the OC.

32. THE HEART RATE SYSTEM PROTOCOL

- 32.1 All heart rate assessments must be undertaken by a member of the Veterinary Commission. Stethoscope Heart rate is the first parameter to be examined and recorded during the inspection. It is an essential criterion to accurately assess the Horse's recovery and fitness to continue. ii Every effort should be taken to accurately record the heart rate. If the examination of the heart rate is disrupted due to movement or excitement of the Horse rendering the examination impossible or inaccurate, the examination is

stopped and recommenced when the Horse is settled. iii the maximum heart rate for passing the inspection is 64bpm or as prescribed in the schedule. iv. When the Horse is presented for inspection, the stethoscope is applied to the left side of the chest wall at approximately the level of the elbow. v. The examiner should locate the best position to auscultate the heart i.e., where the heart sounds are clearly audible. vi A stopwatch must be used to time the count. vii. The stopwatch is started when the heartbeat is audible, and the count starts on the next heartbeat. The stopwatch can be stopped at 15 seconds if the count is 16 or less, at 30 seconds if the count is 32 or less. In both cases the heart rate can be recorded at 64 bpm or less. The Inspection can then be completed. viii. If the heart rate is above 16 beats or 32 beats at 15 or 30 seconds respectively or if the heartbeat is irregular, difficult to hear or demonstrates murmurs, the count must be continued for the full minute. The Horse may be re-inspected or fail to qualify for the next phase. The Cardiac Recovery Index is recorded at each inspection and involves the examination and recording of the heart rate at the start of the inspection and one minute later after the horse has completed the 40-meter trot out and back for gait assessment. The initial heart rate recording may be by the use of the stethoscope (as described above) or with an Approved Electronic Heart Rate System. x. The second heart rate recording of the CRI must be with a stethoscope. At this examination the heart rate is recorded for one minute and the cardiac cycle is examined for any pathological signs that may indicate that the horse is unfit to continue. The CRI is the numerical difference between the first and second heart rates recorded and forms part of the metabolic examination.

- 32.2 UAEERF Approved Electronic Heart Rate Monitoring Systems i. Heart rate is the first parameter to be examined and recorded during the inspection. It is an essential criterion to accurately assess the horse's recovery and fitness to continue ii. Every effort should be taken to accurately record the heart rate. If the examination of the heart rate is disrupted due to movement or excitement of the horse rendering the examination impossible or inaccurate, the examination is stopped and recommenced when the horse is settled. iii. The maximum heart rate for passing the inspection will be 64 bpm or as prescribed in the schedule. iv. When the horse is presented for inspection the electronic HR reader is applied to the left side of the chest wall at approximately the level of the left elbow. v. The examiner should locate the best position to record the heart rate. 48 vi. The reader is started and the assessment commences. The system must provide an assessment at 15 seconds, at 30 seconds, at 45 seconds and at 60 seconds. At each assessment should the heart rate be shown to be 64 bpm or less as defined in the Schedule then the assessment can stop, and the reading recorded. Under such confirmation of high heart rate must follow the above protocol and the second assessment, to be taken immediately, will be taken and the horse will be confirmed as a failure if the heart rate fails to meet the criteria.
- 32.3 Metabolic, gait, and other assessments: Following the heart rate assessment, the Horse must immediately undergo all the other aspects of the Horse Inspection (including trotting to check soundness). with the same Veterinarian that performed the heart assessment. However, the two-phase examination system are allowed in venues with the facilities available to accommodate large number of horse participating in order to speed up the process for the horses to complete there examination.

33. REGISTRATION AND PENALTY FEES

30.1 REGISTRY OFFICE CHARGES

	AED
30.1.1 New Athlete license	250
30.1.2 Child/Junior Athlete license	250
30.1.3 Senior Athlete license – National	250
30.1.4 Renewal of Athlete license - National	250
30.1.5 Senior Athlete license – FEI /Renewal	500
30.1.6 New Trainers license	1000
30.1.7 Renewal of Trainer License	500
30.1.8 Assistance Trainers license	250
30.1.9 Stable Vet License	500
30.1.10 Assistant Stable Vet License	250
30.1.11 Officials	250
30.1.12 Horse registration	500
30.1.13 Annual FEI horse registration	100
30.1.14 Ride entry fees	300
30.1.15 Ride Late entry fee	500
30.1.16 Substitution of nominated horse and or athlete on pre-ride	1000
30.1.17 Change of Ownership (National and FEI)	100
30.1.18 Issue of FEI Passport / Duplicate Passport / Revalidation	800
30.1.19 Issue of UAE Passport / Duplicate Passport / Revalidation	300
30.1.20 Change of Horse name in FEI passport	4700
30.1.21 Change of Horse name in UAE passport	3600
30.1.22 Performance record of horse / athlete	200
30.1.23 Certificate	200
30.1.24 Protest Fees (nonrefundable)	500
30.1.25 Appeal fees to the Disciplinary Committee against a decision of the Ground Jury	1000

30.1.26	Issue of duplicate ID card	200
30.2 FIXED PENALTIES		
24.1.1	Violation in weighing	300
24.1.2	Change of athlete	5000
24.1.3	Reporting with unserviceable equipment	1000
24.1.4	Reporting late for weight control	300
24.1.5	Late renewal or new registration of Athlete/Trainer/Horse	Registration + fee + penalty
24.1.6	After closing of entry (Registration fee + fine AED 500)	500

34. PROCEDURE

- 34.1 Any breach of these Endurance Rules will be dealt with in accordance with the procedures set out in these Endurance Rules or Disciplinary Regulations (where there are none) in accordance with the procedures set out in the FEI General Regulations or other applicable FEI Rules and Regulations.
- 34.2 The FEI provisions, laws and rules shall apply where no special provision is made in the national Endurance rules or Disciplinary Regulations
- 34.3 The sanctions listed in these Endurance Rules are not exhaustive. They apply in addition to any other sanctions set out in Disciplinary Regulations and other applicable FEI Rules and Regulations.

35. CODEX

- 35.1 Codex for Athletes and Registered Trainers Competing in FEI or National Endurance Events
- 30.2.1 These Codex recognizes two distinct roles associated with the preparation and participation of Horses in Endurance Competitions: Athlete and Trainer.
- 30.2.2 For the purpose of this Codex, the "Athlete" is defined as the athlete of the Horse in the Competition.
- 30.2.3 For the purpose of this Codex, the "Trainer" is defined as the person who is in charge of the preparation of the Horse both physically and mentally for Competition.
- 30.2.4 Prior to the Event, the Trainer is responsible for the conditioning of the Horse for the Competition which involves the exercise program, nutrition of the Horse, seeking appropriate Veterinary care and the administration of therapeutic substances under Veterinary advice.
- 30.2.5 In many circumstances, the Athlete, will be the athlete and the Trainer of the Horse.
- 30.2.6 To be successful, both the Athlete and the Trainer must have knowledge of pace and the efficient and safe use of the Horse across country and must be continually aware of both human and equine safety.
- 30.2.7 The Athlete and Trainer must not enter a Horse for Competition or compete a Horse that is suffering from an illness, injury or is receiving medication that would adversely affect or enhance the Horses' ability to compete.
- 30.2.8 The FEI and the UAEERF requires all those involved in the equestrian sport to adhere to the FEI and the UAEERF Code of Conduct for the Welfare of the Horse and to always acknowledge and accept that the welfare of the horse must be paramount. Welfare of the Horse must never be subordinated to competitive or commercial influences.
- 30.2.9 The Athlete and the Trainer must have knowledge of the FEI and the National Endurance Rules, the FEI Veterinary Regulations and FEI Equine Anti-Doping, Human Anti-Doping and Controlled Medication Regulations in addition to an awareness of the General Regulations. They must ensure that they are aware of any annual changes, regularly reviewing the FEI and the National Endurance Rules, Veterinary Regulations and support a Clean Sport.
- 30.2.10 The Athlete and Trainer must abide by these rules and regulations in the preparation for and during the competition.
- 30.2.11** The FEI and the UAEERF has the right to undertake disciplinary actions against an Athlete or Trainer or any other responsible person who does not follow this Codex and FEI Rules and Regulations, to the detriment of the welfare of the Horse and the integrity of the sport.
- 30.2.12 Codex for FEI and UAEERF Endurance Officials**
- 30.2.12.1 The FEI and UAEERF Endurance Official is a recognized authority on Endurance, who must have knowledge of the principles of Endurance of the FEI and National - Rules and, based on his star rating is qualified to judge the appropriately rated FEI International and UAEERF National Endurance Competitions. He is always representing the FEI and UAEERF.
- 30.2.12.2 An FEI and UAEERF Endurance Official must avoid any actual or perceived conflict of interest. An Endurance Official must have a neutral, independent and fair position towards Athletes, owners, Trainers, organizers and other Officials and integrate well into a team. Financial and/or personal interest must never influence or be perceived to influence his way of judging. Activities which will lead to or may lead to a "conflict of interest" when officiating at a CEI, include but are not limited to:
- 30.2.12.2.1 Acting as Team chef of National teams at international level or being responsible/co-responsible for selecting teams and/or individuals or training athletes within the NF.
- 30.2.12.2.2 To be owner/part-owner of Horses taking part in the event.

- 30.2.12.2.3 Being in a situation of financial dependence or gaining financial profit from owners, Athletes, trainers, organizers or other related organizations.
- 30.2.12.2.4 Having a close personal relationship with an Athlete.
- 30.2.12.2.5 Nationalistic judging.
- 30.2.12.2.6 In addition to the notification requirements set out at point 7 below, an Endurance Official is responsible for notifying the Organizer of any of the above or other possible conflicts of interest or situations that may be perceived as such.
- 30.2.12.2.7 During an Endurance Event an Endurance Official must be punctual and professional in the way of behavior and duties.
- 30.2.12.2.8 An Endurance Official must be well prepared for the Event he is judging and has to cooperate well with the organizer and his colleagues.
- 30.2.12.2.9 An Endurance Official must be dressed appropriately and must always be mindful that he is representing the FEI and UAEERF.
- 30.2.12.2.10 The FEI and UAEERF has the right to undertake disciplinary actions against Endurance Officials who do not follow the Codex and FEI rules. Such disciplinary actions may consist of:
- ◆ Warning letter.
 - ◆ Temporary or Provisional suspension and;
 - ◆ Temporary/Permanent removal from the FEI Endurance Officials list.
- 30.2.12.2.11 Conflict of Interest: Endurance Officials who may have a real or perceived Conflict of Interest should notify the Organizer at the time of appointment or as soon as a conflict of interest arises prior to the competition. If the declared conflict of interest, in the opinion of the President of Jury, impairs or appears.
- 30.2.12.2.12 to impair the integrity of the judging of the competition, the Endurance Official will have to stand down. Conflicts of Interest should be declared at the pre-ride briefing of officials and Athletes.
- 30.2.12.2.13 Conflict of Interest: Employees of Equestrian Federations, Sponsors and Organizing Committees cannot act as an FEI Endurance Official at FEI events organized through that Federation or under that Sponsor or Organizing Committee.

ANNEX 1: OFFICIALS REQUIRED FOR COMPETITIONS

Event	Officials	Position	Officials Rating	No. of Entries	Official required	No. of Add. Entries	Add. Official required
Qualifier	Ground Jury	President	National or above	30	1	40	1
	Technical Delegate	TD	National or above		1		
		Member	National or above		1		

	Vet. Commission	President	National or above		1		
		Member	National or above		2		1
	Treatment Vet.	President	National or above		1		
		Member	National or above		2		2
	Chief Steward	CS	National or above		1		
		Stewards	National or above		5		5
Competition upto 119 km	Ground Jury	President	FEI 2* or above	30	1	40	
	Technical Delegate	TD	FEI 2* or above		1		
		Member	National or above		1		1
	Vet. Commission	President	FEI 2* or above		1		
		Member	FEI 2* or above		2		1
	Treatment Vet.	President	FEI 2* or above		1		
		Member	FEI 2* or above		2		1
	Chief Steward	CS	FEI 2* or above		1		
		Stewards	National or above	5		5	
Competition 120 - 139 km	Ground Jury	President	FEI 3* or above	30	1	40	
	Technical Delegate	TD	FEI 3* or above		1		
		Member	National or above		1		1
	Vet. Commission	President	FEI 3* or above		1		
		Member	FEI 2* or above		2		1
	Treatment Vet.	President	FEI 3* or above		1		
		Member	FEI 2* or above		2		1
	Chief Steward	CS	FEI 2* or above		1		
		Stewards	National or above	5		5	
Competition 140 km & above	Ground Jury	President	FEI 4* or above	30	1	40	
	Foreign Judge	FJ	FEI 3* or above		1		
	Technical Delegate	TD	FEI 4* or above		1		
		Member	FEI 3* or above		1		1
	Vet. Commission	President	FEI 4* or above		1		
		Member	FEI 3* or above		2		1
	Treatment Vet.	President	FEI 4* or above		1		
		Member	FEI 2* or above		2		1
Chief Steward	CS	FEI 2* or above	1				
		Stewards	National or above	5		5	
National Regional Championship	Ground Jury	President	FEI 4* or above	30	1	40	
	Foreign Judge	FJ	FEI 3* or above		1		
	Technical Delegate	TD	FEI 4* or above		1		
		Member	FEI 3* or above		1		1
	Vet. Commission	President	FEI 4* or above		1		
		Member	FEI 3* or above		2		1
	Treatment Vet.	President	FEI 4* or above		1		
		Member	FEI 2* or above		2		1
Chief Steward	CS	FEI 2* or above	1				
		Stewards	National or above	5		5	

ANNEX 2: FOREIGN PERFORMANCE RECORD FORM

HORSE Name..... Passport / FEI Registration No

A Certificate of Capability issued by a National Federation as required under FEI Art.816 and UAEERF Art.6.10 will be accepted as proof of eligibility.

Event Category	Country / Venue	Name of Event	Name of Athlete	Date of Event	Distance	Speed	Riding time	Result

Date: / / 20 ____

NF: Name, Stamp and Signature

Owner / Trainer: Name and Signature

Email: _____

Mobile: _____

ANNEX 3: CLARIFICATION OF ELIMINATION CODES

WD: Withdrawn

- The Combination does not show up at the Event.
- The Combination decides not to participate in the Competition at or prior to the First (Pre-Ride) Inspection in accordance with Article 809.5.3.

RET: Retired

- The Combination decides not to continue in the Competition in accordance with Article 5.22.

DSQ: Disqualified

- A Combination is Disqualified in accordance with Article # 5.3.
- A reason for Disqualification must be communicated to the FEI via the official results and reports. The reason for Disqualification will be verified with the Officials concerned.
- A Horse may be Disqualified and designated as Failed to Qualify for a veterinary or other reason (see list under FTQ below).

FNR: Finished Not Ranked

- FNR means that the Combination has (or is deemed to have) completed a Competition (including all Horse Inspections) but is not ranked in the final classification (see e.g., Article 820.2 regarding an error on course).
- A Combination may be designated FNR with the approval of the President of the Ground Jury and/or the Technical Delegate. The Officials must provide reasons for the FNR designation.
- If in addition to the FNR designation the Combination receives a certificate of completion from the Officials at the Event, the Competition will count as a 'successful completion' for qualification purposes.

FTQ: Failed to Qualify

The FTQ designation must be accompanied by one or more of the additional codes below:

- **SP:** Speed (not respecting any applicable speed restriction)
- **GA:** Irregular gait
- **ME:** Metabolic
- **MI:** Minor Injury (e.g., slight soreness, wound, etc.)
- **SI-MUSCU:** Serious Injury (musculoskeletal injury)
- **SI-META:** Serious Injury (metabolic injury)
- **CI:** Catastrophic Injury
- **OT:** Out of Time (failure to complete a Loop within the allocated time, but passes the Horse Inspection after that Loop)
- **FTC:** Failed to Complete (non-completion of a Loop but passes the Horse Inspection after that Loop). The Officials must provide reasons for the FTC designation, and an explanation of what happened to the Combination.

The above FTQ codes may be cumulative, as shown in the table below:

Code #1		Code #2		Code #3
SP GA ME MI SI-MUSCU SI-META CI OT FTC	+	SP GA MSE MI	+	SP

ANNEX 4: UAE RANKINGS FOR HORSES, ATHLETES, TRAINERS, OWNERS AND STABLES

UAE RANKING 1ST OCT TO 30TH SEPT - CHART OF POINTS DISTRIBUTIONS

Ride Category	Ride Distance	Position	Basic Points	Additional Points [if 25 finishers]	Bonus Points	Total Points [Basic+Add.+Bonus]
Category C - 140-160km & above in 1 day or 90-100km per day over 2 days or 70 - 80km per day over 3 days or more.	140k & above	1 st	100	25	15 points for 3 day ride (i.e. 100+25+15 to the winner) and 5 points for a 1 day ride (i.e. 100+25+5 to the winner) with 25 total finishers	140
		2 nd	90	24		129
		3 rd	84	23		122
		4 th	80	22		117
		5 ^h	77	21		113
		6 th	74	20		109
		7 th	71	19		105
		8 th	68	18		101
		9 th	65	17		97
		10 th	62	16		93
		11 th	59	15		89
		12 th	56	14		85
		13 th	53	13		81
		14 th	50	12		77
		15 th	47	11		73
Category B - 120-139km in 1 day or 70-89km per day over 2 days	120k to 139k	1 st	70	25	15 points for 3 day ride (i.e. 70+25+15 to the winner) and 5 points for a 1 day ride (i.e. 70+25+5 to the winner) with 25 total finishers	100
		2 nd	62	24		91
		3 rd	57	23		85
		4 th	54	22		81
		5 ^h	51	21		77
		6 th	48	20		73
		7 th	45	19		69
		8 th	42	18		65
		9 th	40	17		62
		10 th	38	16		59
		11 th	36	15		56
		12 th	34	14		53
		13 th	32	13		50
		14 th	30	12		47
		15 th	28	11		44
Category A - 100km to 119km in 1 day	80k to 119k	1 st	40	25	5 points for all finishers in a 1-day ride	70
		2 nd	35	24		64
		3 rd	32	23		60
		4 th	30	22		57
		5 ^h	28	21		54
		6 th	26	20		51
		7 th	24	19		48
		8 th	22	18		45
		9 th	20	17		42
		10 th	18	16		39
		11 th	16	15		36
		12 th	14	14		33
		13 th	12	13		30
		14 th	10	12		27
		15 th	9	11		25

ANNEX 5: EXAMINATION AFTER THIRD (OR SUBSEQUENT) FTQ-GA

Further to the table at Article 7.6.3, after a Horse Fails to Qualify for irregular gait (FTQ-GA) for a third (or subsequent) time in a rolling year, the following procedure must be applied before the Horse may return to Competition to ensure that the Horse has properly recovered before competing again:

1. Notification:

- 1.1 The Horse must be flagged in the UAEERF database as having Failed to Qualify for irregular gait three (or more) times in a rolling year.
- 1.2 If an Athlete intends to ride a Horse that has had three (or more) Failures to Qualify for irregular gait in a rolling year, that Athlete (or the Trainer) must notify the UAEERF Endurance Department of the Horse's next Competition at least four weeks prior to the Horse's next Competition.
- 1.3 The UAEERF Endurance Department will inform the UAEERF Veterinary Department of the Horse's status and ask for it to arrange for the Horse to be examined in accordance with this Annex 5. The UAEERF Endurance Department will also inform the President of the Ground Jury of the Horse's status and the additional examination.
- 1.4 The UAEERF Veterinary Department will inform the Foreign Veterinary Delegate and Veterinary Commission of the Horse's status and the required additional examination.

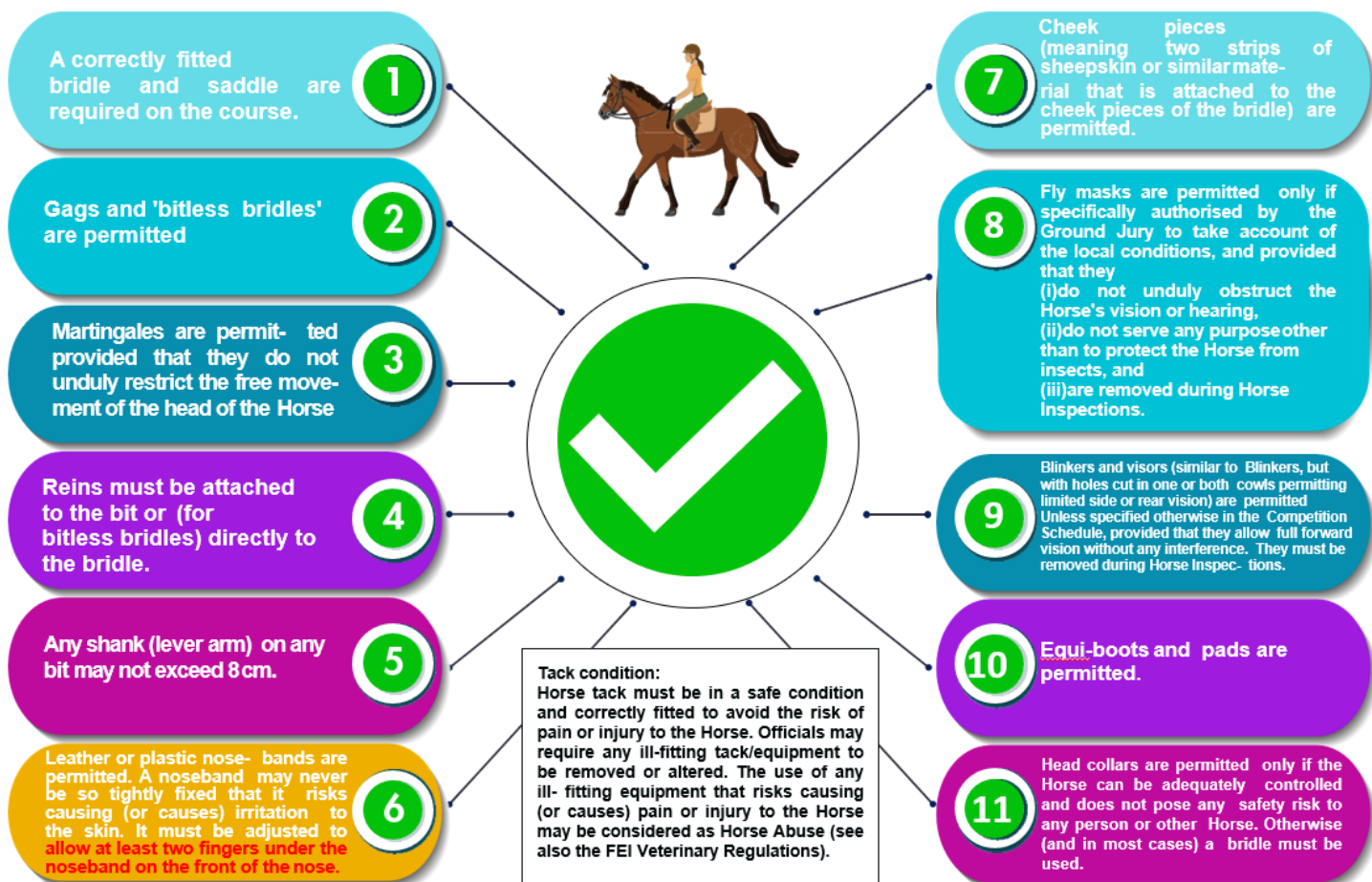
2. Examination procedure:

- 2.1 Before the First (Pre-Ride) Inspection, a panel of three Veterinarians (including the President of the Veterinary Commission, Foreign Veterinary Delegate, and a member of the Veterinary Commission) must carry out a detailed examination to determine if the Horse is fit to compete.
- 2.2 The examination must consist of, but is not limited to:
 - (a) Walk and trot on a straight line;
 - (b) Walk and trot both ways in a circle; and
 - (c) Palpation of relevant tissues.
- 2.3 The panel of Veterinarians must notify the Ground Jury of the results of the examination (in accordance with the Endurance Rule). The Ground Jury must decide whether or not the Horse is fit to continue to the First (Pre-Ride) Inspection.
- 2.4 During the Competition, the Veterinary Commission must closely monitor the Horse.
- 2.5 If the Horse passes the Final Horse Inspection, the UAEERF Endurance Department will remove the flag from the Horse's profile on the UAEERF database

ANNEX 6: CRITERIA TO OBTAIN AN ENDURANCE TRAINER LICENSE

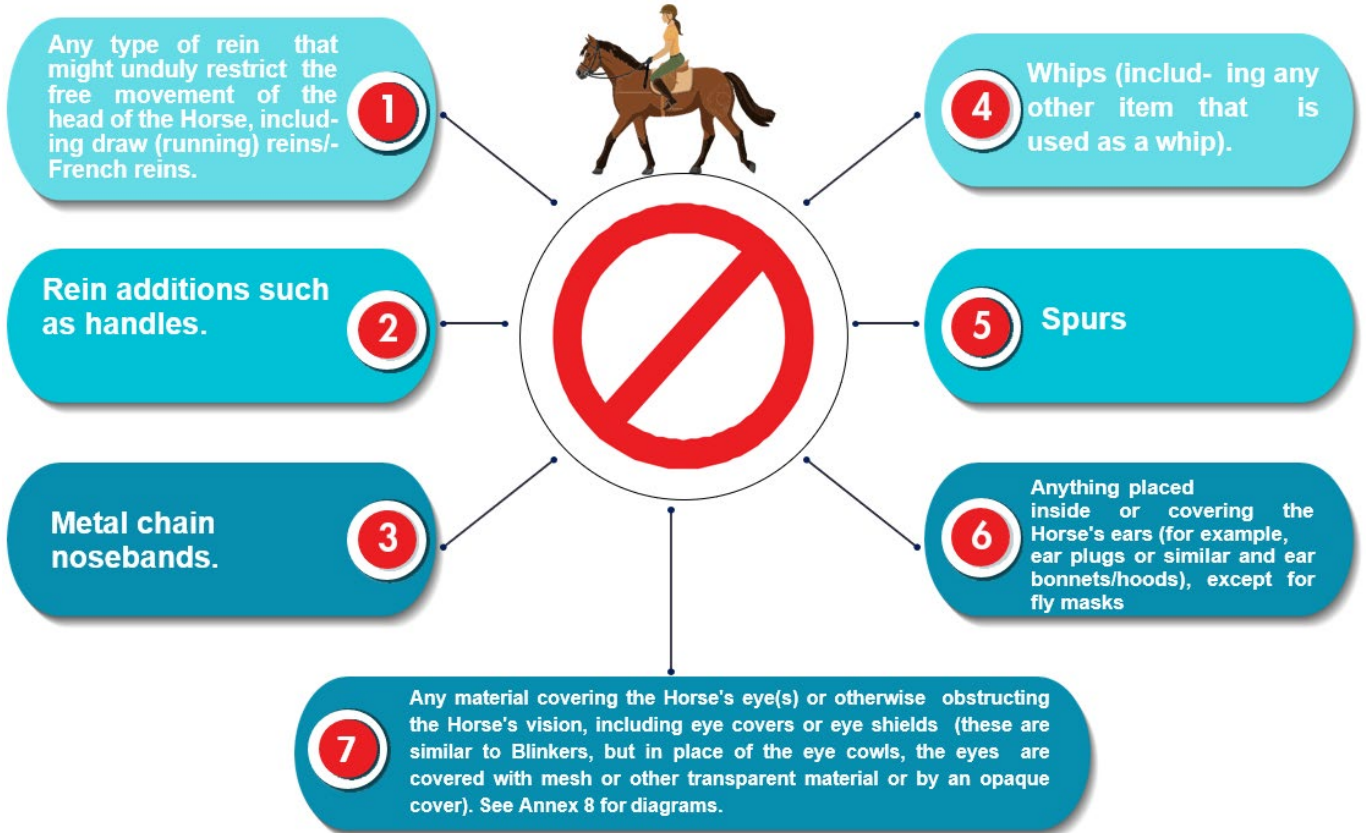
- 1 Minimum age of applicant should be 21 years.
- 2 The applicant should have a good experience in endurance with a knowledge of national and international endurance rules; preference will be given to endurance riders.
- 3 A no objection letter/letter of consent from the applicant's stable addressed to the UAE Equestrian and Racing Federation (UAEERF).
- 4 An Experience Certificate from an active trainer licensed by the UAEERF valid for more than two seasons with a participation in a minimum of ten endurance rides in the two-year period. The certificate issued should state that the applicant has worked as an assistant trainer for a period of not less than one year from the date of submitting the application.
- 5 A trainer providing the experience letter can issue only one certificate during the entire endurance season except the experienced trainers who can issue two certificates if they have more than 25 horses.
- 6 The applicant should have a minimum of five endurance horses under his training registered with UAEERF endurance section, with a declaration in writing. In case the horses are not under the applicants training, approval must be obtained from the owner of the horses.
- 7 The applicant from any foreign nation must provide a No Objection Letter from the Federation of his country of origin stating that his/her National Federation has no objection for training in the UAE.
- 8 An Electronic online application with the following attachments (i) a valid passport copy (ii) valid Emirates ID copy (iii) photograph (iv) VISA page in case of foreign nationals (v) FEI registration number, if any (vi) all the above to be submitted to the UAEERF.
- 9 The applicant must obtain a minimum of 70% in the theoretical examination.
- 10 If the applicant fails the theoretical examination on the first attempt, he/she will be allowed a second attempt after a period of not less than two weeks. Maximum three attempts will be allowed in one season.
- 11 A payment of AED 1000/- to be paid as trainer license fee, after successful completion of the examination.
- 12 Submitting the application or signing the examination paper is considered as an implicit approval of all conditions and laws.
- 13 UAEERF reserves the right to issue, suspend or revoke the license of any trainer for any reason according to the local and international regulations, regulations and law of endurance and other laws in the country.

ANNEX 7: TACK AND EQUIPMENT
Illustration 7.1: PERMITTED TACK (ART. 21.7)



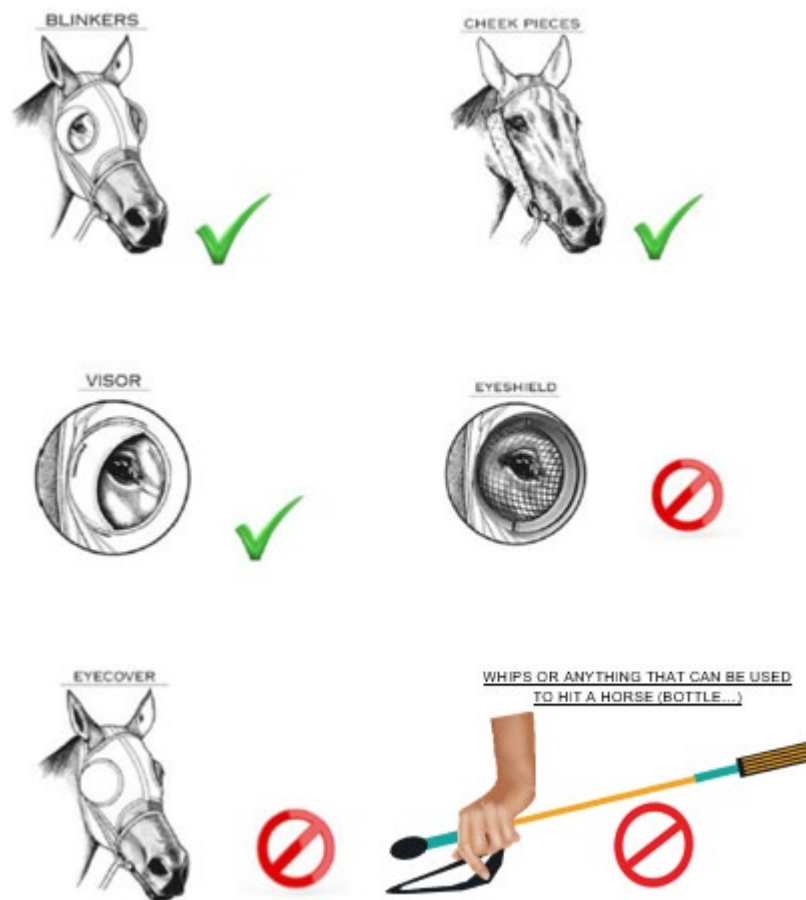
ANNEX 7: TACK AND EQUIPMENT

Illustration 7.2: PROHIBITED TACK/EQUIPMENT (ART. 20.11)



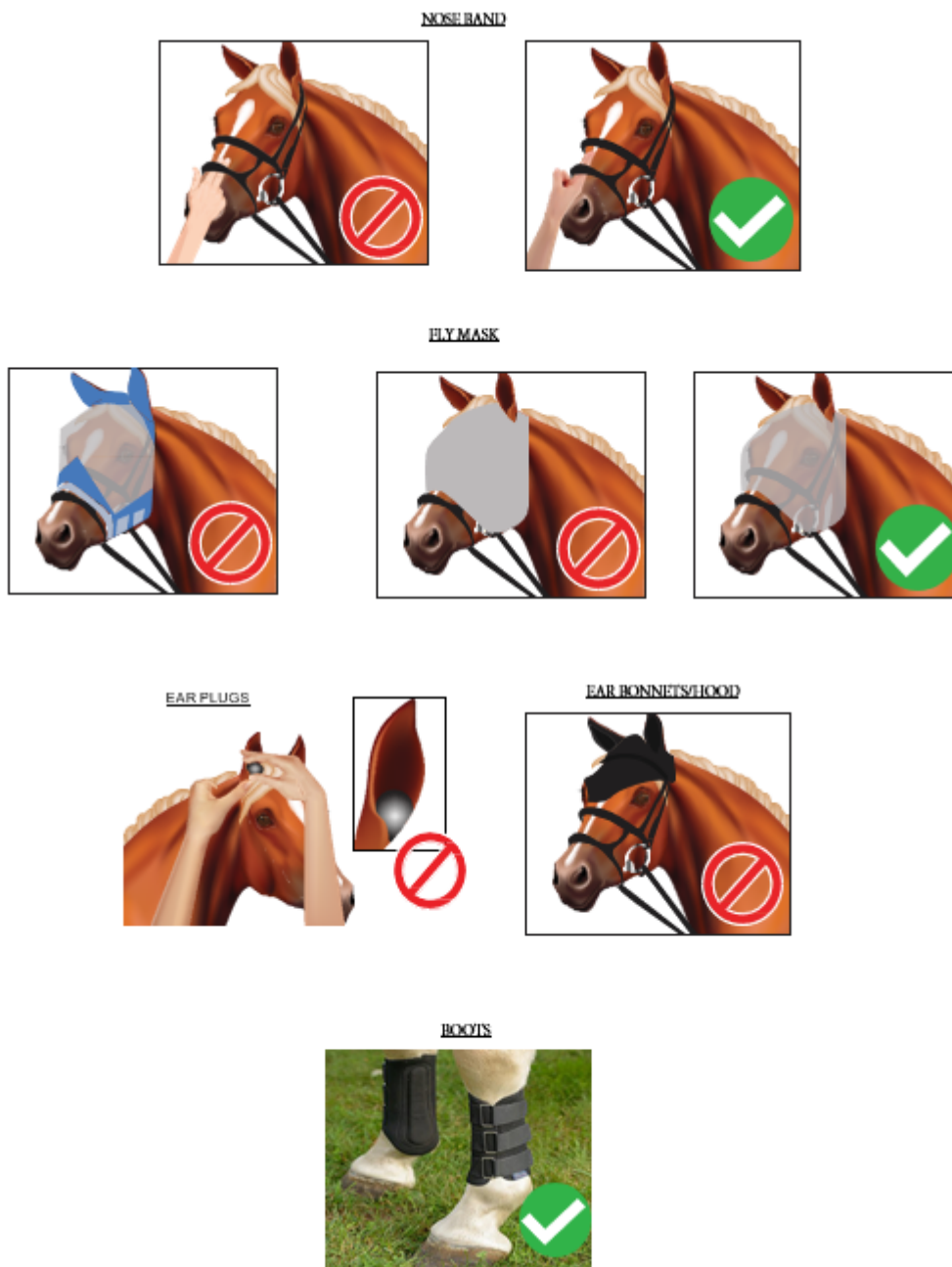
ANNEX 8: DIAGRAMS OF BLINKERS AND CHEEK PIECES

Illustration 8.1: The following provides illustration of permitted/prohibited blinkers and cheek pieces, as described in Articles 20.5



ANNEX 8: DIAGRAMS OF BLINKERS AND CHEEK PIECES

Illustration 8.2: The following provides illustration of permitted/prohibited Blinkers and cheek pieces, as described in Article 20.7.8

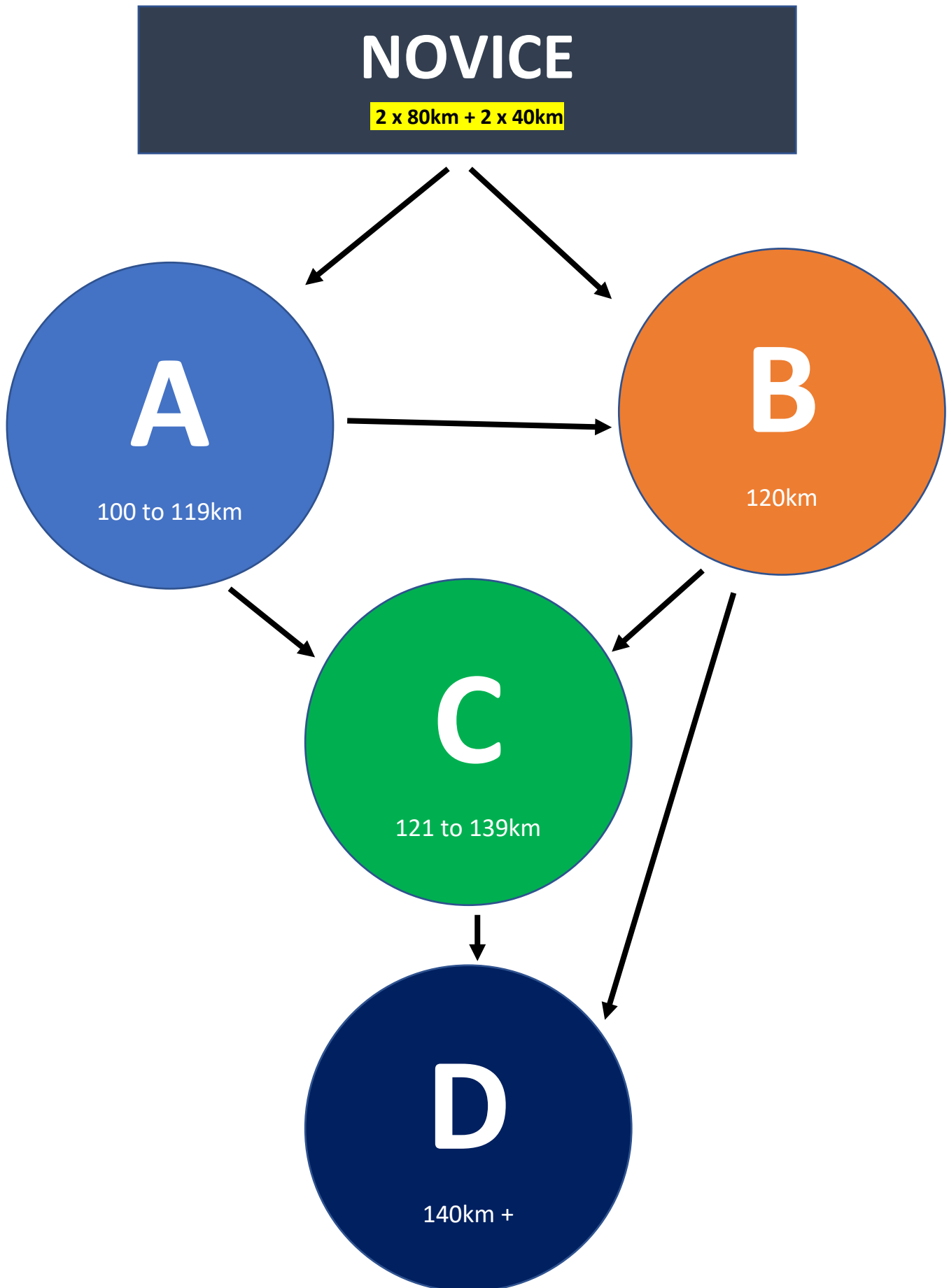


ANNEX 9: DECORUM DURING HORSE INSPECTIONS

Illustration 10.1: As described in Article 16.2.3.2



QUALIFICATION & ELIGIBILITY



If an Athlete or a horse fails to successfully complete a competition or revalidate a qualification at this level of which he/it has qualified within 2 years for horse and 5 years for athletes, the Athlete/horse will automatically drop down one level of qualification

